



defence

Department:

Defence

REPUBLIC OF SOUTH AFRICA

**ICANDELO LESHUMI ELINESIBINI 14
INCWADANA**

UKUKHUTHAZWA KOFIKELELO KULWAZI

UKUKHUTHAZWA KWEMVUME KOKUBA NEMVUME KULWAZI INCWADANA YESEBE LEZOKHUSELO

1. Umgaqo siseko welizwe loMzatsi ka 1996 (umthetho weshumi elinesibhozo (108)) icandelo lamashumi amathathu anesibini uyacacisa ukuba (1) wonke umjntu unelungelo lemvume kulo naluphi na ulwazi olubanjwe nguRhulumente yaye (2) uwiso mthetho lika zwelonke kufanele limiselwe ukuze linike iziphumo kweli lungelo.
2. Ukukhuthazwa kwelungelo kulwazi umthetho wesibini wenkulungwane ezimbini (2 of 2000), unika ingqwalasela kweli lungelo elibe neziphumo nonyaka ka 2001 ngo Matshi. Imigaqo nkqubo emibini yaye yaziswa kwisebe leZokhuselo: umgaqo nkqubo ekwazisweni kokukhuthazwa kwemvume kulwazi lowo umthetho waye wabhengezwa ngo nyaka ka 2001 ngo Matshi. Umthetho wenkulungwane ezimbini wona wabhengezwa ngo Meyi ka 2002.
3. Ngokwezigqibo zomthetho wokukhuthazwa kwemvume kulwazi kunye nemiyalelo yeSebe lezoKhuselo unobhala wesebe lezoKhuselo nguye umphathi wale ofisi kunye noMphathiswa weZokhuselo naMagqala oMkhosi kwakunye nabasondele emagunyeni beSebe lezoKhuselo. Umphathi kaRhulumente wobuchwephesha bolwazi wanyulwe njengesekela leSebe leZokhuselo lale ofisi yolwazi. Yena ke unoxanduva kuNobhala weZokhuselo ukuze ajongane nazo zonke izicelo zolwazi ngokomthetho welungelo kulwazi. Iintloko zamacandelo okanye zamaqumrhu/ amasetyana zenyulwe ukuze zisebenze njengamasekela ompathi wale ofisi yolwazi; bona ke baya kunceda umphathi kaRhulumente wezobuchwephesha ukuze ofumane lonke olu lwazi lufunekayo okanye luceliweyo ngokomthetho.
4. Ikomiti ecebisa le ofisi yolungelo kulwazi eye yasekwa ukuze icebise umphathi wale ofisi kwingcebiso zakhe azenzayo kwiintloko zamasebe/ zamacandelo malunga nezicelo zolwazi kunye nokunceda aba baphathi balomthetho kwizingxengxezo zangaphakathi.
5. iqumrhu lelungelo lwemvume kulwazi nalo lize lasekwa njengeyona ndawo eya kuthi ithabathe zonke izicelo zolwazi kunye neminye imicimbi esondele kulo mba. Yona ke iya kuthi incede abaceli malunga nazo zonke izinto ezifunekayo ukuze umntu athi afake isicelo sakhe solwazi.
6. Injongo yale ncwadana kukuvumela wonke amalungu ka wonke wonke ukuze abone ingcaciso yamaxwebhu akwiSebe leZokhuselokunye nokwazi zonke indlela ezilandelwayo okanye emazilandelwe xa ubani ethe wafuna olu lwazi/ lamaxwebhu ukuba avele afumaneke nje na okanye hayi.


 (DR S.M. GULUBE)
 SECRETARY FOR DEFENCE: DEPARTMENT OF DEFENCE INFORMATION
 OFFICER

IZIQULATHO

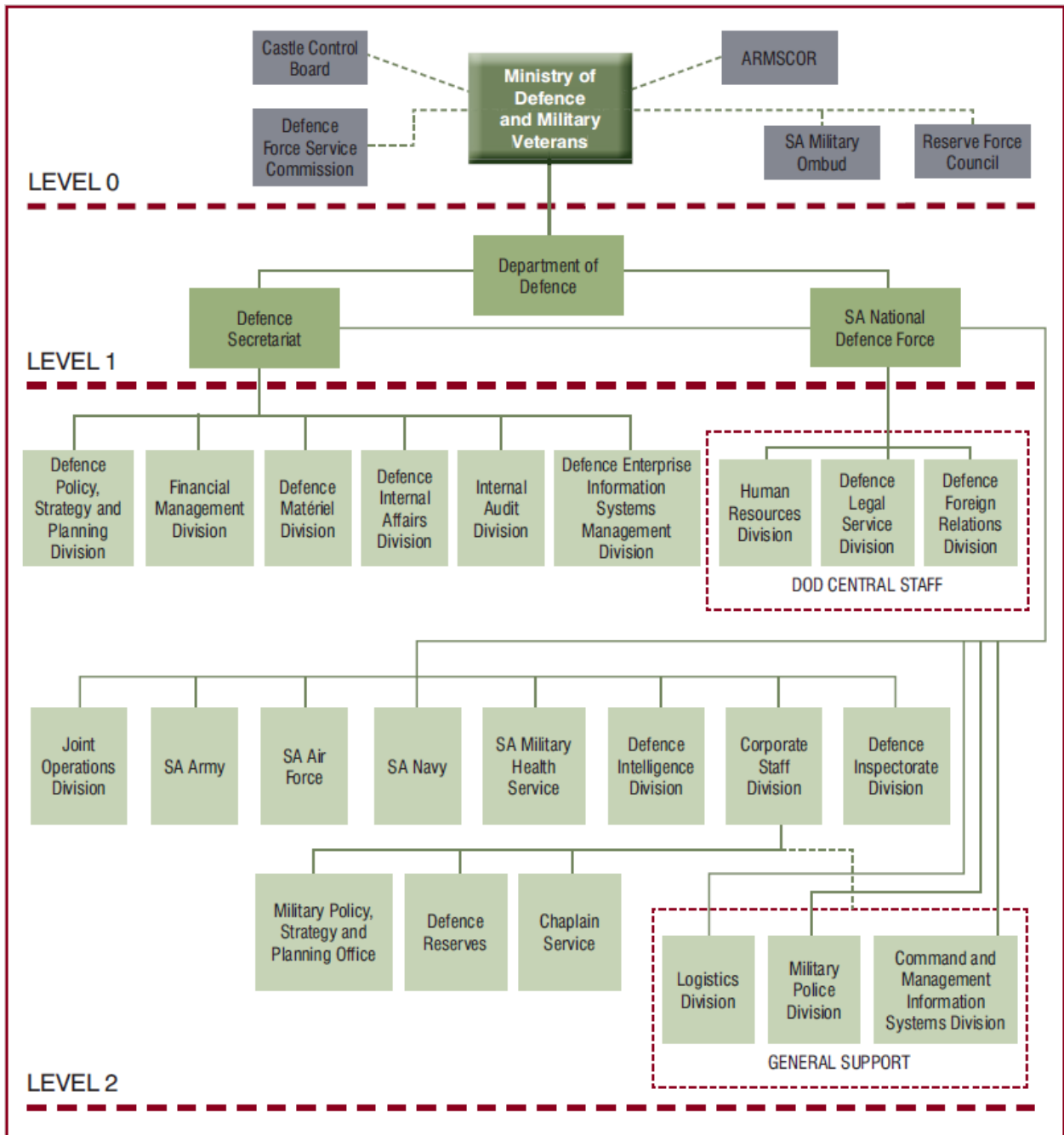
Imisebenzi kunye nesakhiwo/ ubume beSebe leZokhuselo	1
Umbono	1
Umsebenzi	1
Iziphumo zoKhuselo	1
Iimveliso zoKhuselo	1
Ukwakhiwa okuphangaleleyo kweSebe lezoKhuselo	2
Inkcukacha zonxibelelwano	3
Umthetho okhokhelela ukukhuthazwa kwemvume kulwazi	10
Ingaba isikhokelelo somthetho wokukhuthazwa kwemvume kulwazi sifumaneka phi	10
Ungayifumana kanjani imvume kulwazi kwisebe lezokhuselo ngokomthetho wokukhuthazwa kwemvume kulwazi	12
Indlela yokucela	12
Izigaba zesibheni sangaphakathi	15
Imvume kumaxwebhu ibanjwe lisebe lezokhuselo	16
Ukuhlolwa	16
Ukuthengiswa	20
Ukukhuphela / ukukopa	20
Afumaneka ngaphandle kwentlawulo	25
Iindidi zamaxwebhu	28

INKCUKACHA NGOKWEMIGAQO YECADELO LESHUMI ELINESINE LOMTHETHO WESIBINI WENKULUNGWANE EZIMBINI WOKUKHUTHAZWA KWELUNGELO KULWAZI.

IMISEBENZI KUNYE NOKWAKHIWA KWESEBE LEZOKHUSELO

1. Umbono. iSebe lezoKhuselo liqinisekisa ukhuseleko olululo kuMzantsi Afrika okhululekileyo, oko likwenza ngokomgaqo siseko.
2. Umsebenzi. iSebe lezoKhuselo linikeza abaphathi, lilungisa lize liqeshe abanako nabayakuthi bahambiselane kunye neemfuno zoMzantsi Africa olawulwa ngumgaqo siseko, uwiso mthetho likazwelonke kunye nabasebenzi base palamente abachophela imiba ekumila kunje kunye nababhexeshi. Konke ke oku kuya kuthi kunikezwe ngabalawuli bokwenene, nokulungiswa kunye nokuqeshwa kwabanako kunye nabakwaziyo okufunwa sisizwe kunye noMzantsi Afrika uwonke.
3. Iziphumo zoKhuselo. Iziphumo zezoKhuselo zisondelelene kwakunye nezeseqingatha esiphakathi nesingunobangela wokuphumelela kweziphumo ezithile zeSebe Iziphumo yilento sinqwenela ukuyipasisa iziphumo zoKhuselo zizezi zilandelayo:
 - a. Izwekazi loMzantsi Afrika liyakhuselwa futhi linakekelwe.
 - b. Ukukhuliswa kolawulo lokhuselo
4. Iimveliso zoKhuselo. Iimveliso zoKhuselo zisondelelene kwimveliso zokugqibela zeSebe leZokhuselo. Zichazwa njengento esiyivelisayo okanye esiyinikezelayo. Iimveliso zeSbve leZokhuselo zizezi:
 - a. Iyalela ukuzibophelela kukhuselo ngokomgaqo nkqubo nesicwangciso Sombuso.
 - b. Ukunikeza umsebenzi olungele ukwenza ukhuselo.
 - c. Ukunikeza umhlahlandlela onguwo kukhuselo.
 - d. Ukuqinisekisa ukhuseleko eluhambelana nemigaqo yomsebenzi.
5. ukwakhiwa okuphangaleleyo kweSebe lezoKhuselo
 - a. Umphathiswa weSebe lezoKhuselo kunye naMagqala oMkhosi nuyena ogunyameleyo kwiSebe eli.
 - b. ISebe lezoKhuselo lenziwe kukudibana kukaNobhala wezoKhuselo kwakunye nesebe lezoKhuselo loMzantsi Afrika. uNobhala wezoKhuselo nguyena ogunyamele nonika ingxelo nokwanguMpathi weSebe ukanti yona iNtloko yeSebe lezoMkhosi sisizwe soMzantsi Afrika inoxanduva lokunikeza umyalelo kwakunye nolawulo leSebe. uNobhala weZokhuselo kwakunye nentloko yeSebe lezoKhuselo lesizwe soMzantsi Afrika banendlela ezimbiniezahlukeneyo abachaza kuzo njengoko zicacisiwe kulo mzobo.

ISAKHIWO ESIPHANGALELEYO SESEBE LEZOKHUSELO



Njengoko ipapashiwe Kwisixhobo Socwangciso Sesebe Lezokhuselo lonyaka ka 2015 ukuya ku 2020 elinomhla 11 ku Matshi 2015 iphepha lamashumi amabini 27.

INKCUKACHA ZONXIBELELWANO

Inkcukacha Zonxibelelwano

Umsebenzi: Secretary for Defence
Head of Department
Accounting Officer
Information Officer

Idilesi yeposi: Private Bag X910, Pretoria, 0001

Inombolo yomnxeba: (012) 355 6220

Inombolo yefekisi: (012) 355 5729

Idilesi ye imeyile: secdef@dod.mil.za

Ukuchazwa kwemisebenzi: Ukunika umhlahlandlela wesebe kwiSebe lezoKhuselo ukuze kuqinisekiswa ukuhamba kakuhle nokwenza ngendlela eyiyo kanye nokuqhutywa kakuhle kwemicimbi ngendlela yowiso mthetho kunye nomgaqo nkqubo.

Icandelo labaphathi kunye nenkqubo yolwazi lezoKhuselo

Umsebenzi: Department of Defence Deputy Information Officer

Idilesi yeposi: Private Bag X910, Pretoria, 0001

Inombolo yomnxeba: (012) 672 1586

Inombolo yefekisi: (012) 672 2111

Idilesi ye imeyile: gito@dod.mil.za

Ukuchazwa kwemisebenzi: Ukunika umhlahlandlela nokuvelela ukwenziwa kwenkqubo yokukhuthazwa kwemvume kulwazi kwiSebe lezoKhuselo ngokomthetho lowo omisiweyo.

Iqumrhu Lokhuthazo Lwemvume Kulwazi

Umsebenzi: Director Promotion of Access to Information

Idilesi yeposi: Private Bag X910, Pretoria, 0001

Inombolo yomnxeba: (012) 672 2972

Inombolo yefekisi: (012) 672 2111

Idilesi ye imeyile: paia@dod.mil.za

Ukuchazwa kwemisebenzi: ukusingatha inkqubo yokukhuthazwa kwemvume kulwazi ngaphakathi kwiSebe lezoKhuselo ngokomthetho omisiweyo yolu khuthazo. Umthetho wesibini weenkulungwane ezimbini.

Icandelo lomgaqo nkqubo wezoKhuselo ulungiselelo kunye nesicwangciso

Umsebenzi: Chief of Defence Policy, Strategy and Planning
 Idilesi yeposi: Private Bag X159, Pretoria, 0001
 Inombolo yomnxeba: (012) 355 6224
 Inombolo yefekisi: (012) 355 5153
 Ukuchazwa kwemisebenzi: Ukucebisa kwimicimbi emalunga nenkqubo kunye nokulawula izicwangciso zeSebe nendlela okwenziwa ngayo izinto ngokwenkqubo ka zwelonke ngendlela yenkqubo yezoKhuselo. Zonke ke ezozicwangciso zisenzelwa ukulawulwka nokuhamba kakuhle kwezinto ezenziwa lisebe nokunika umkhondo kulo, ukanti kusenziwa oko nokunika inkxaso nentsebenziswano kwikomiti yolawulo lomkhosi.

Icandelo Lezomnotho/ Ezemali

Umsebenzi: Chief Financial Officer
 Idilesi yeposi: Private Bag X175, Pretoria, 0001
 Inombolo yomnxeba: (012) 355 6217
 Inombolo yefekisi: (012) 355 5564
 Ukuchazwa kwemisebenzi: Ukuncedisana noNobhala wezoKhuselo ukuthwala uxanduva lemicimbi yezomnotho kwindawo ezinjengokucwangcisa ngemali nokulungisa ingxelo engemali. Ukuphuhlisa nokunakekela indlela zokulawula imali ngaphakathi kwisebe. Ukusungula indlela ezithile zemali ngokomyalelo kaNobhala weSebe.

Icandelo Lokhuselo Lempahla

Umsebenzi: Chief of Defence Material
 Idilesi yeposi: Private Bag X910, Pretoria, 0001
 Inombolo yomnxeba: (012) 355 5136
 Inombolo yefekisi: (012) 355 5154
 Ukuchazwa kwemisebenzi: Ukunikeza ingqwalasela ekukhokeleni nasekulawuleni impahla kweli candela, kwenziwe izinto kusetyenziswa indlela eyiyo necacileyo kulandelwa imigaqo eyiyo ukufezekisa izisombululo.

Imicimbi Yezokhuselo Yelizwe Jikelele

Umsebenzi: Chief of Defence International Affairs
 Idilesi yeposi: Private Bag X910, Pretoria, 0001
 Inombolo yomnxeba: (012) 355 6207
 Inombolo yefekisi: (012) 355 5368
 Ukuchazwa kwemisebenzi: Ukuqhulunkqa kunye nokunikeza umgaqo-nkqubo kunye nengcebiso ekunikezeleni kunye nasekuphathweni kwemicimbi yezoKhuselo yangaphandle kunye nasekuqwalaselweni kokuthabatha inxaxheba kubungqondongqondo bezoKhuselo ukuze kuqinisekiswa ukuba lo mgaqo-nkqubo uhambisana nokuquka kwakunye nokudibanisa umgaqo-nkqubo welizwe.

Icandelo Lokuphicotha Imali Lanagaphakathi

Umsebenzi: Chief Audit Executive
 Idilesi yeposi: Private Bag X910, Pretoria, 0001
 Inombolo yomnxeba: (012) 355 6200
 Inombolo yefekisi: (012) 355 5846
 Ukuchazwa kwemisebenzi: Ukunikeza inkonzo zokuphicotha incwadi zemali ngaphakathi kwiSebe lezoKhuselo.

Icandelo Lezokhuselo Lendlela Okugcinwa Ngayo Ulwazi Nolulawulwa Ngayo

Umsebenzi: Government Information Technology Officer
 Idilesi yeposi: Private Bag X910, Pretoria, 0001
 Inombolo yomnxeba: (012) 672 1586
 Inombolo yefekisi: (012) 672 2111
 Ukuchazwa kwemisebenzi: Ukunikeza umhlahla ndlela kuzo zonke inkonzo kweli candela malunga nolwazi kunye nendlela yombuso yokuqhagamshelana, imingcipheko kunye nokwenziwa kwiSebe lezoKhuselo.

Umkhosi Wokhuselo Womzantsi Afrika

Umsebenzi: Chief of the South African National Defence Force
 Idilesi yeposi: Private Bag X414, Pretoria, 0001
 Inombolo yomnxeba: (012) 355 6060
 Inombolo yefekisi: (012) 355 6023
 Ukuchazwa kwemisebenzi: Ukuyalela uMkhosi woKhuselo woMzantsi Afrika.

Icandelo Lenkqubo Zamajoni

Umsebenzi: Chief Joint Operations
 Idilesi yeposi: Private Bag X1043, Thaba Tshwane, 0143
 Inombolo yomnxeba: (012) 674 5500
 Inombolo yefekisi: (012) 674 5506
 Ukuchazwa kwemisebenzi: Ukunikeza kunye nokuqeshela eZokhuselo abantu abanako okanye abakwaziyo usebenza ukuze ziphumelele zonke inkqubo zamajoni kunye nezo ezithi zenziwe ngokubambisana namanye amaSebe kuquka nawangaphandle.

Amajoni Omzantsi Afrika

Umsebenzi: Chief of the South African Army
 Idilesi yeposi: Private Bag X981, Pretoria, 0001
 Inombolo yomnxeba: (012) 355 1001
 Inombolo yefekisi: (012) 355 2055
 Ukuchazwa kwemisebenzi: Ukunikeza ukhuseleko kubantu boMzantsi Afrika jikelele kunye nakuMkhosi wonke wokhuselo.

Umkhosi Womoya Womzantsi Afrika

Umsebenzi: Chief of the South African Air Force
 Idilesi yeposi: Private Bag X199, Pretoria, 0001
 Inombolo yomnxeba: (012) 312 2630
 Inombolo yefekisi: (012) 312 1422
 Ukuchazwa kwemisebenzi: Ukunikeza inkonzo zokhuselo ezilungisiweyo emoyeni kunye nokuvikela uMzantsi Afrika wonke.

Umkhosi Wamanzi Womzantsi Afrika

Umsebenzi: Chief of the South African Navy
 Idilesi yeposi: Private Bag X104, Pretoria, 0001
 Inombolo yomnxeba: (012) 339 4235
 Inombolo yefekisi: (012) 339 4463
 Ukuchazwa kwemisebenzi: Ukunika inkonzo zokuselo zamanzi ezilungisiweyo kunye nokuvikela uMzantsi Afrika uwonke.

Umkhosi Wezempilo Womzantsi Afrika

Umsebenzi: Surgeon General
 Idilesi yeposi: Private Bag X102, Centurion, 0046
 Inombolo yomnxeba: (012) 367 9001
 Inombolo yefekisi: (012) 367 9002
 Ukuchazwa kwemisebenzi: Ukunika inkonzo zeMpilo ezilungisiweyo kwezokhuselo kunye nokuvikela uMzantsi Afrika uwonke.

Icandelo Lezongqondongqondo Zokhuselo

Umsebenzi: Chief of Defence Intelligence
 Idilesi yeposi: Private Bag X367, Pretoria, 0001
 Inombolo yomnxeba: (012) 315 0453
 Inombolo yefekisi: (012) 315 0105
 Ukuchazwa kwemisebenzi: Ukunika inkonzo zokhuselo zoNgqondongqondo ezizo kwizigaba zonke ngokuthi kuqeqeshwe amalungu kuphinde kunanakekelwe zonke ezi nkonzo.

Icandelo Labasebenzisanayo

Umsebenzi: Chief of Corporate Staff
 Idilesi yeposi: Private Bag X159, Pretoria, 0001
 Inombolo yomnxeba: (012) 355 6040
 Inombolo yefekisi: (012) 355 6043
 Ukuchazwa kwemisebenzi: Ukcebisakwimigaqo nkqubo nakwimicimbi eyelelene nayo kunye nokujongana nendlela zomkhosi zocwangiso, olu cwangciso luquka okuphuhlisa imigaqo nkqubo, uksungula izicwangciso nendlela yokwenza kunye nokugada okanye ukujongana nezi zicwangciso, kunye nokunika ingxelo.

Icandelo Lezobuntloli Zokhuselo

Umsebenzi: Inspector General
 Idilesi yeposi: Private Bag X671, Pretoria, 0001
 Inombolo yomnxeba: (012) 312 4930
 Inombolo yefekisi: (012) 312 4708
 Ukuchazwa kwemisebenzi: Ukuqinisekisa ulawulo olululo nolungendlela lwenkonzo kunye namacandelo esebe lezoKhuselo

Icandelo Lolungiselelo Lwenkxaso Yamajoni

Umsebenzi: Chief of Logistics
 Idilesi yeposi: Private Bag X319, Pretoria, 0001
 Inombolo yomnxeba: (012) 671 0293
 Inombolo yefekisi: (012) 671 0576
 Ukuchazwa kwemisebenzi: Ukunikeza inkxaso edityanisiweyo nelungele inkonzo zesebe lezokhuselo kunye namacandelo onke.

Icandelo Lamapolisa

Umsebenzi: Provost Marshall General
 Idilesi yeposi: Private Bag X161, Pretoria, 0001
 Inombolo yomnxeba: (012) 686 4000
 Inombolo yefekisi: (012) 686 4040
 Ukuchazwa kwemisebenzi: Ukunikeza imicimbi yenkonzo zamapolisa kwinkonzo kunye nakumacandelo onke eSebe lezoKhuselo ngokuyalelwa yintloko yomKhosi woKhuselo woMzantsi Afrika.

Icandelo Lezomyalelo Nolawulo Lolwazi

Umsebenzi: Chief of Command and Management Information Division
 Idilesi yeposi: Private Bag X161, Pretoria, 0001
 Inombolo yomnxeba: (012) 355 5100
 Inombolo yefekisi: (012) 355 5113
 Ukuchazwa kwemisebenzi: Ukunikeza umyalelo kunye nokuphatha indlela yolwazi kunye nenkonzo ezisondelele kwezo kwiSebe lezoKhuselo.

Icandelo Lemigaqo Nkqubo Kunye Nocwangciso

Umsebenzi: Chief of Military Policy, Strategy and Planning
 Idilesi yeposi: Private Bag X159, Pretoria, 0001
 Inombolo yomnxeba: (012) 355 5084
 Inombolo yefekisi: (012) 355 6043
 Ukuchazwa kwemisebenzi: Ukucebisa kwimicimbi yemigaqo nkqubo kunye nokulawula imihlahla ndlela yocwangciso. Le ndlela iquka uphuhliso lemigaqo nkqubo, ukusungula indlela nezicwangciso kunye nokunika ingxelo ngazo zonke ezonto.

Amajoni Angamalalela Ezokhuselo

Umsebenzi: Chief of Defence Reserves
 Idilesi yeposi: Private Bag X161, Pretoria, 0001
 Inombolo yomnxeba: (012) 355 6301
 Inombolo yefekisi: (012) 355 5882
 Ukuchazwa kwemisebenzi: Ukukhokelela uphuhliso nonakekelo lendlela yamajoni angamalalel. Ukunikeza ochwepheshe bamacebo kwimicimbi yamajoni angamalalela kunye nokuzama ukupapasha nokwazisa ngokubanzi inkqubo zamajoni anagamalalela ezoKhuselo.

Inkonzo Zabefundisi

Umsebenzi: Chaplain General
 Idilesi yeposi: Private Bag X479, Pretoria, 0001
 Inombolo yomnxeba: (012) 991 1684
 Inombolo yefekisi: (012) 991 1594
 Ukuchazwa kwemisebenzi: Ukunikeza inkonzo zabefundisi ezikhathalela wonke amalungu eSebe lezoKhuselo kunye nabantwana bawo. Ukukhuthaza ukukhula emoyeni, inkxaso yezentlalo kunye nendlela elungileyo yokuziphatha.

Abasebenzi Abaphakathi Nendawo Besebe Lezokhuselo

Icandelo Lokunakekelwa Kwabasebenzi

Umsebenzi: Chief Human Resource
 Idilesi yeposi: Private Bag X159, Pretoria, 0001
 Inombolo yomnxeba: (012) 355 6047
 Inombolo yefekisi: (012) 355 6049
 Ukuchazwa kwemisebenzi: Ukunikezela inkxaso epheleleyo yenkonzo zokunakekelwa kwamalungu eSebe leZokhuselo.

Icandelo Lokhuselo Lenkonzo Zomthetho

Umsebenzi: Adjudant General
 Idilesi yeposi: Private Bag X159, Pretoria, 0001
 Inombolo yomnxeba: (012) 355 5362
 Inombolo yefekisi: (012) 355 6239
 Ukuchazwa kwemisebenzi: Ukunikeza inkonzo zomthetho eziphucukileyo, eziqinisekisiweyo nezingasiwayo ngaphandle kunye nokunika inkxaso ngokwemfuno zeSebe lezoKhuselo.

Icandelo Lezokhuselo Lobudlelwane Bangaphandle

Umsebenzi: Chief of Defence Foreign Relations
 Idilesi yeposi: Private Bag X367, Pretoria, 0001
 Inombolo yomnxeba: (012) 312 4921
 Inombolo yefekisi: (012) 312 4701
 Ukuchazwa kwemisebenzi: Ukunikeza uMphathiswa woKhuselo, iSebe lezoKhuselo kunye namaGqala oMkhosi inkonzo zobudlelwane banagaphandle.

UMTHETHO OKHOKHELELA UKUKHUTHAZWA KWEMVUME KULWAZI

6. Icandelo leshumilomthetho wlokukhuthazwa kwemvume kulwazi lifuna uMphathi wamalungelo abantu ukuba adibanise aze abhengeze isikhokelelo esilula esiqondeka kalula ukuze eso sikhokelelo sancede ekufumanekeni kwamaxwebhu kunye nencwadi kunye nokuvumela ilungelo lomntu ngamnye kulwazi. Esi sikhokelelo ngamanye amaxesha sichazwa njengecandelo leshumi isikhokelelo.

7. Sinika umceli ulwazi lonke olufunekayo xa eza kuthi acele imvume nakuwaphi na amaxwebhu. Icacisa kwakhona ngenkcukacha zonxibelelwano zamasebe ka hulumente namasebe agcina amaxwebhu wombuso kunye nenkcukacha zonxibelelwano zenkampani ezininzi zabucala. UMphathi kufanele asihlaziye esi sikhokelo noba kukanye okungenani ngeminyaka emibini.

INGABA ISIKHOKHELELO SOMTHETHO WOKUKHUTHAZWA KWEMVUME KULWAZI SIFUMANEKA PHI

8. Esi sikhokelelo siyafumaneka ngeelwimi zonke ezisemthethweni zoMzantsi Afrika ezizezi: isiNgesi, isiBhulu, isiNdebele, isiXhosa, isiZulu, isiPedi, isiSuthu, isiTswana, isiSwati, isiVenda kunye nesiTsonga.

9. Ikopi zesisikhokelelo zingafumaneka kuzo zonke iofisi zamaphondo zoMphathi wamalungelo abantu. Ukongeza ikopi ezikwi khompuyutha ziyafumaneka kumakhasi onxibelelwano woMphathiswa kule dilesi (www.sahrc.org.za) okanye kumakhasi onxibelelwano wequmrhu labacebisi abazimeleyo idilesi yabo ithi (www.opendemocracy.org.za) singafumaneka nakwindawo zokugcina imbali yoMzantsi Afrika kule dilesi (www.saha.org.za).

10. inkcukacha zonxibelelwano zoMphathi wamalungelo abantu zeofisi zamaphondo nazi:

- a. Eyona ofisi ingundoqo
Johannesburg
Umnxeba 011 877 3600
Ifekisi 011 403 0625
- b. IMpuma Koloni
Port Elizabeth
Umnxeba 043 722 7828
Ifekisi 043 722 7830
- c. eFree State
Bloemfontein
Umnxeba 052 447 1130
Ifekisi 051 447 1128
- d. KwaZulu Natal
Durban
Unxeba 031 304 7323
Ifekisi 031 304 7323

- e. eLimpopo
Polokwane
Umnxeba 015 291 3500
Ifekisi 015 291 3500
- f. eMpumalanga
Nelspruit
Umnxeba 013 752 8292
Ifekisi 013 752 6890
- g. eMntla Koloni
Upington
Umnxeba 054 332 3993
Ifekisi 054 332 7750
- h. eMntla Ntshona
Rustenburg
Umnxeba 014 592 0694
Ifekisi 014 594 1089
- i. eNtshona Koloni
Cape Town
Umnxeba 021 426 2277
Ifekisi 021 426 2875

UNGAYIFUMANA KANJANI IMVUME KULWAZI KWISEBE LEZOKHUSELO NGOKOMTHETHO WOKUKHUTHAZWA KWEMVUME KULWAZI

11. Indlela yokucela. Umceli kufuneka alandele lendlela icaciswe apha ngezantsi ukuze acele imvume kwiSebe lezoKhuse. Olu uhlobo lucacisiwe luhambelana nomthetho wesikhokelo sokukhuthazwa kwemvume kulwazi umthetho wesibini weenkulungwane ezimbini (2 of 2000):

- a. Umceli makasebenzise u fomu A othe washicilelwa kwincwadi kaRhulumente (isaziso sikaRhulumente R187 umhla weshumi elinesihlanu ku Febhuwari ngonyaka ka 2002). Nokwemigaqo yecandelo leshumi elinesibhozo ifomu (A) kufanele igcwaliswe ngokupheleleyo, ibhalwe umhla inyanga nonyaka, isayinwe ibe seyingeniswa kwiCandelo lokukhuthazwa kwemvume kulwazi.
 - i. Idelesi yokuposa: Private Bag X910, Pretoria,001
 - ii. Inombolo yomnxeba (012) 672 1528
 - iii. Inombolo yefekisi (012) 672 2111
 - iv. Idilesi ye imeyile paia@dod.mil.za
- b. Ngokwemigaqo yecandelo leshumi elinesibhozo (2) (a) ikopi egqimfiziweyo yesazisi okanye ipasi kufanele ifakwe kunye nesicelo eso (nefomu).
- c. Ukuba ngaba umceli ucela ulwazi endaweni yomntu othile, apho kufakwe khona isicelo kufanele oko kucaciswe, imvume ayifumeneyo kulowo acelele yena ebhaliweyo kunye nekopi yesazisisi salowo kucelwa egameni lakhje kufanele nazo zibe khona zifakwe kunye ne fomu leyo yesicelo.
- d. Ukuba ngaba lowo ocelayo ucela ulwazi okanye ixwebhu lwelungu eseliswelekile oku kulandelayo kufanele kudityaniswe:
 - i. Ngokwemigaqo yecandelo lamashumi amathathu anesine (34 (2) (e)) umceli kufanele afake ubungqina bokuba eneneni ungulowo oshiywe noxanduva okanye nelifa ngulowo oswelekileyo. Okanye afake ileta echaza ukuba uthunywe ngulowo oshiywe ngoswelekile ukuba afumane ixwebhu okanye ulwazi.
 - ii. Ngokomgaqo wecandelo leshumi elinesibhozo (8 (2) (a) (i)) isiqinisekiso sokubhubha okanye ikopi egximfiziweyo yesazisi salowo uswelekileyo kufanele zifakwe nazo xa kusenziwa isicelo eso.
- e. Umceli kufanele anikeze zonke inkcukacha zexwebhu elo Acela imvume kulo okanye ngalo kuquka nenombolo yereferensiukuba ngaba iyaziwa ukwenzela ukuba ixwebhu elo lifumaneke. Ukuba ngaba isithuba sokubhala zonke ezo nkcukacha sincinane umceli uya kuthi aqhubeke

nokucacisa kwelinye iphepha elisecaleni aze azidibanise zonke ezo zinto kunye ne fomu leyo yesicelo. Aze kananjalo umceli lowo asayine wonk eke lo maphepha awongezelelweyo xa ewadibanisa ne fomu.

- f. Ubungqina bentlawulo leyo eyenziwe ngumceli engamashumi mathathu anesihlanu ngokwemigaqo yecandelo lamashumi amabini anasibini (22 (1)) kufanele ibekhona ke ihambe nesicelo eso ukuze kuzuzeke imvume kulomaxwebhu. Intlawulo leyo yesicelo kufanele ukuba ifakwe kwibhanka (indawo yogcino mali) etyunjiweyo yeSebe lezoKhuselo, okanye ingahlawulwa nangokuthi umceli ayikhuphele ngekhompuyutha kwibhanka leyo yeSebe. Ukuba ngaba ucela imvume kumaxwebhu akho akunantlawulo elindelekileyo/ akuvumelekanga ukuba uhlawule. Inkucukacha zebhanki leyo yeSebe lezoKhuselo nazi:

Ibhanka:	ABSA
Intlobo ye akhawunti:	1 Current/ Cheque (Deposit)
Isebe:	Bosman Street, Pretoria
Ikhawunti yeSebe:	632005
Igama lomnikazi we Akhawunti:	RSA Department of Defence
Inombolo ye akhawunti:	1044280074
Ireferensi yokufakwa kwemali:	30001212/ imali yesicelo
Ikhawunti yokuhlawula:	30001212
Inombolo yomnxeba:	(012) 328 3143

- g. Ukuba umceli akanako ukufunda okanye ukubhala okanye unesiphako somzimba kufuneka enze isicelo soxwebhu olushicilelweyo ngamazwi. iSebe lezoKhuselo icandelo lokukhuthazwa kwemvume kulwazi kufanele ligcwalise ifomu endaweni yalowo ucelayo lize ke limnike ikopi umceli lowo.
- h. Umceli kufanele acacise ukuba isicelo seskopi yoxwebhu okanye ufuna ukuluhlola uxwebhu olo kwindawo yokugcina amaxwebhu kwiSebe lezoKhuselo. Kungenjalo ukuba ngaba ixwebhu elo alibhalwanga ephepheni lingaqwalaselwa kwifomu yomceli ukuba kuyenzeka.
- i. Ukuba ukongeza kwimpendulo eyongezelelweyo yesicelo solwazi/ soxwebhu, umceli ufuna ukuxelelwa ngesigqibo ngenye indlela umzekelo ngomnxeba oko kufanele kucaciswe.
- j. Kufanele kuqatshelwe ke oku: xa kuthe isicelo soxwebhu sithe sapisiswa ukuze likhutshwe ixwebhu elo ngokwemigaqo yomthetho wokukhuthazwa kwemvume kulwazi kungaba khona intlawulo ekufuneka zenziweezizezoku kulandelayo:
- i. ukuphanda nokulungisa ixwebhu ukuba livele intlawulo engangeshumi elinesihlanu lerandi (R15.00) ngeyure nganye (ingabalwa ke iyure yokuqala yokuqala lo msebenzi) iya kuthi ihlawulwe.

- ii. Kufuneka kuqatshelwe ukuba ngokwemigaqo yecandelo lamashumi amabini anethoba (29 (3)) indawo yokugcina amaxwebhu kwiSebe lezoKhuselo ayisayi kubopheleleka ukuba yenze iikopi.

“ukuba ngaba umceli uthe wacela imvume kwifomu ethile ngokukhethekileyo, imvume mayoyanyiswe kwimigaqo yecandelo lamashumi amabini anesibhozo, ukuze kunikezwe lo fomu

ngaphandle kokuba ukwenza kanjalo kungathi kuphazamisane nabo nokusebenza kwabo bathi benze lo msebenzi:

okanye ukuba ngaba lonto ingathi yonakalise indlela eloxwebhu elikhuseleke ngayo”

- iii. Intlawulo equka ukwenziwa kwekopi zamaxwebhu onke iya kuba zisenti ezingamashumi amathandathu 60c iphepha elilingana nawencwadi A4.
- iv. Intlawulo equka ukwenziwa kweekopi ezishicilelweyo zamaxwebhu onke iya kuba zisenti ezingamashumi amane 40c iphepha elilingana nelencwadi A4.
- v. Intlawulo equka ulwazi olusekhompuyutheni okanye olunikezwa ngendlela yobuchwepheshe bomashini, ifomu efundekayo yekopi ekhompuyutheni, ifomu efundekayo ekwi:
- (1) kwidiskhi iyakuba ziponti ezimbini neshumi R 5.00 idisikhi inye
- (2) ize idisikhi yekhompakhthi ibe ngamashumi amane R 40.00 erandi inye.
- vi. Intlawulo equka amaxwebhu akhutshelweyo aba yimifanekiso ebonakalayo iyakuba ngamashumi amabini anesibini erandi R 22.00 iphepha ngalinye elilingana nencwadi A4.
- vii. Yona intlawulo yekopi zemifanekiso ebonakalayo iyoba ngamashumi amathandathu erandi R 60.00.
- viii. Intlawulo equka ukukhutshelwa kwexwebhu libe lelinamazwi elimamelwayo iya kuba ziponti ezintandathu R 12.00 iphepha ngalinye elilingana nelencwadi A4.
- ix. Intlawulo eyeyekopi yoxwebhu lwamazwi yona iya kuba ziponti ezisibhozo ezineshumi R 17.00.
- x. Ulwazi okanye uxwebhu oluceliweyo lingakhululwa xa ngabe enye yezi ntlawulo zikhankanywe apha ngentla ithe yenziwa kwiSebe futhi nobungqina bentlawulo buthe bafakwa kwicandelo lokukhuthazwa kwemvume kulwazi.

12. Izigaba zesibheno sangaphakathi. iSebe lezokhuselo linendlela yuqhuba isibheno sangaphakathi njengoko kuchaziwe kwicandelo lamashumi asixhenxe anesine 74 nakumashumi asixhenxe anesihlanu 75 lomthetho. Le ndlela yenziwa nakuyiphi na imeko apho athi umceli/ umntu wesithathu anqwenele ukubhena kwisigqibo esenziwe ligosa lolwazi ngokuqwalasela:

- a. intlawulo ezihlawuliweyo;
- b. ukwandiswa kwexesha;
- c. ifomu yemvume kunye
- d. ukwaliwa kwemvume kuxwebhu.

13. Xa ngaba umceli okanye umntu wesithathu efaka isibheno sangaphakathi. Ifomu B yesibheno echaziweyo kufanele ifakwe njengesihlomelo B. Lo fomu ifanelwe kukugcwaliswa ngokupheleleyo ifakwe kwiSebe lezoKhuselo kwicandelo lokukhuthaza imvume kulwazi. (isaziso sikaRhulumente R 187 umhla weshumi elinesihlanu ku Februwari ngo 2002) iSebe lezoKhuselo icandelo lokukhuthazwa kwemvume kulwazi liya kugqithisela isibheno eso kunye namaxwebhu akhapha isibheno eso kuNobhla woKhuselo, kwigosa lolwazi neliya kuthi lona lisidlulisele isibheno kuMphathiswa wezoKhuselo kunye namagqala oMkhosi, nakubalawuli ukwenzela kuphume isigqibo.

14. iSebe oKhuselo icandelo lokukhuthazwa kwemvume kulwazi liya kuthi lazise umceli okanye umntu wesithathu ngeziphumo zesibheno eso. Umceli okanye umntu wesithathu ongenelisekanga ziziphumo zesibheno uya kuthi phakathi kwentsuku ezingamashumi amathathu anesixhenxe 37 afake isicelo eNkundleni yamatyala ukuze kuphume isigqibo sokugqibela. Ukuba asikhange sifakwe ke eso sicelo enkundleni yamatyala ngexesha elo elifanelekileyo kuya kuthatyathwa isigqiboso uMphathiswa wezoKhuselo namaGqala oMkhosi ukanti ukuba eso sicelo senziwa kuya kuthi kulindwe iziphumo zetyala lenkundla yamatyala.

IMVUME KUMAXWEBHU IBANJWE LISEBE LEZOKHUSELO

15. Indawo zamaxwebhu avele afumaneke. Isaziso ngokwemigaqo yecandelo leshumi elinesihlanu 15 (2) omthetho sichaza indawo zamaxwebhu eziqhu zika wonkewonke ezifumanekayo ngaphandle kokuba umntu acele imvume ngokwemigaqo yomthetho. La maxwebhu angafunyanwa kwindawo zogcino kwiSebe lezoKhuselo (ungajonga inkcukacha zendawo zogcino zeSebe lezoKhuselo kwiphepha lamashumi amabini anethoba 26).

UKUCHAZWA KWENDAWO ZAMAXWEBHU AVELE AFUMANEKE NGOKWEMIGAQO YECANDELO LESHUMI ELINESIHLANU (15 (1) (a) YOMTHETHO WOKUKHUTHAZWA KWEMVUME KULWAZI, 2000	INDLELA YOKUFUMANA IMVUME KUMAXWEBHU
UKUHLOLWA NGOKWEMIGAQO YECANDELO LESHUMI ELINESIHLANU 15 (1)(a)(i):	
<p><u>Upapasho lweSebe</u></p> <ol style="list-style-type: none"> i. Umthetho woKhuselo 1957 umthetho ongunombolo 44 ka 1957 njengoko ulungisiwe. ii. iWhite paper kwezoKhuselo (1996) iii. ukuqwalaselwa kwakhona kwZokhuselo (2014) iv. imiyalelo okanye imigaqo nkqubo yeSebe lezoKhuselo. v. lingxelo zonyaka zeSebe lezoKhuselo vi. Isicangciso seSebe lezoKhuselo. vii. Izaziso zolwazi zeSebe lezoKhuselo <p><u>Izaziso zothethathethano kunye nentsebenziswano</u></p> <ol style="list-style-type: none"> i. Ad Astra 1980-1996 ii. Kommondo 1949-1970 iii. Militaria 1969-1996 iv. Scientia Militaria 1997-2000 v. Nongqai 1913-1959 vi. Nyala 1971-1994 vii. Paratus 1970-1994 viii. Salut 1994-2000 ix. SA Defence Force Review 1985-1991 x. SA Soldier 2001-2015 <p><u>Amaxwebhu aquka uMkhosi woKhuselo woMzantsi Afrika kunye nemisebenzi yawo</u></p> <p>AGREE DI/SDCIC/R/514 enomhla we 12 Oktowubha 2011 DI/SDCI/DCIC/R/514/2/7/ enomhla ka Apreli 2015</p> <p>ALET/SOUTHGO-TONGA DI/DCI/DCIC/R/514/2/7 enomhla we 31 Janyuwari 2011</p> <p>ALTAR DI/SDCI/R/514/2/4 enomhla we 26 Septemba 2011</p> <p>ALWYN DI/R/514/2/7 enomhla we 16 Meyi 2006</p> <p>ASKARI DI/R/514/2/7 enomhla we 27 Oktowubha 2005 DI/SDCI/DCIM/R/514/2/7 enomhla we 27 Juni 2008 DI/SDCO/DCIC/R/514/2/7 enomhla ka Janyuwari 2010 DI/SDCI/DCIC/R/514/2/7 enomhla ka Janyuwari 2012</p> <p>ASTRIX DI/SDCI/R/514/2/4 enomhla we 26 Septemba 2011</p> <p>BARGAIN DI/SDCI/DCIC/R/514/2/7 enomhla we 15 Ogasti 2012</p> <p>BARUTA DI/SDCI/DCIC/R/514/2/7 enomhla we 30 meyi 2014</p> <p>BEERPUT DI/R/514/2/7 enomhla we 16 Meyi 2006</p>	<p>La maxwebhu nezifoto zingahlolwa kwindawo yokugcina amaxwebhu kwiSebe lezoKhuselo.</p>

UKUCHAZWA KWENDAWO ZAMAXWEBHU AVELE AFUMANEKE NGOKWEMIGAQO YECANDELO LESHUMI ELINESIHLANU (15 (1) (a) YOMTHETHO WOKUKHUTHAZWA KWEMVUME KULWAZI, 2000	INDLELA YOKUFUMANA IMVUME KUMAXWEBHU
UKUHLOLWA NGOKWEMIGAQO YECANDELO LESHUMI ELINESIHLANU 15 (1)(a)(i):	
<p>BLOUWILDEBEES DI/R/202/3/7 enomhla we 21 Novemba 2001</p> <p>BOLSON DI/R/514/2/7 enomhla we 16 Meyi 2006</p> <p>BOLSTER DI/SDCI/DCIC/R/514/2/7 enomhla ka Epreli 2015</p> <p>BOMBAY DI/SDCI/DCIC/R/514/2/7 enomhla we 15 Ogasti 2012</p> <p>BOOTLACE DI/SDCI/DCIC/R/514/2/4 enomhla we 15 Epreli 2011</p> <p>BORAX DI/R/514/2/7 enomhla we 16 Meyi 2006 DI/SDCI/DCIC/R/514/2/7 enomhla we 15 Ogasti 2012</p> <p>BOWLER DI/SDCI/DCIC/R/514/2/7 enomhla we 15 Ogasti 2012</p> <p>BRUILOF DI/R/514/2/1/1 enomhla we 11 Okthowbha 2000</p> <p>BUDGE DI/R/514/2/7 enomhla we 16 Meyi 2006 DI/SDCI/DCIC/R/514/2/4 enomhla we 15 Epreli 2011 DI/SDCI/DCIC/R/514/2/7 enomhla we 23 Epreli 2012 DI/SDCI/DCIC/R/514/2/7 enomhla we 18 Juni 2012 DI/SDCI/DCIC/R/514/2/7 enomhla we 15 Ogasti 2012</p> <p>CANNABIS DI/SDCI/DCIC/R/514/2/4 enomhla we 15 Epreli 2011</p> <p>CARROT DI/SDCI/DCIC/R/514/2/4 enomhla we 15 Epreli 2011</p> <p>CASTILLO DI/R/514/2/7 enomhla we 16 Ogasi 2006</p> <p>CINEMA DI/R/514/2/7 enomhla we 16 Meyi 2006 DI/SDCI/DCIC/R/514/2/4 enomhla we 26 Septemba 2011 DI/SDCI/DCIC/R/514/2/7 enomhla we 31 Janyuwari 2012</p> <p>COLOSSEUM DI/DCI/DCIC/R/514/2/7 enomhla we 31 Janyuwari 2011</p> <p>COLOSSUS DI/SDCI/DCIC/R/514/2/4 enomhla we 15 Epreli 2011</p> <p>COMBAT DI/SDCI/DCIC/R/514/2/7 enomhla we 15 Ogast 2012</p> <p>COTTON DI/SDCI/DCIC/R/514/2/4 enomhla we 15 Epreli 2011</p> <p>CUCUMBER DI/SDCI/DCIC/R/514/2/4 enomhla we 26 Septemba 2011</p> <p>CUPID DI/R/514/2/7 enomhla we 16 Meyi 2006 DI/SDCI/DCIC/R/514/2/7 enomhla we 15 Ogasti 2012</p> <p>DAISY DI/SDCO/DCIC/R/514/2/7 enomhla ka Janyuwari 2010</p> <p>DINGO DI/SDCI/DCIC/R/514/2/7 enomhla we 23 Epreli 2012</p> <p>DISA/KASALA DI/SDCI/DCIC/R/514/2/4 enomhla we 26 Septemba 2011</p> <p>DOEMPA DI/SDCI/DCIC/R/514/2/4 enomhla we 26 Septemba 2011</p>	

UKUCHAZWA KWENDAWO ZAMAXWEBHU AVELE AFUMANEKE NGOKWEMIGAQO YECANDELO LESHUMI ELINESIHLANU (15 (1) (a) YOMTHETHO WOKUKHUTHAZWA KWEMVUME KULWAZI, 2000	INDELELA YOKUFUMANA IMVUME KUMAXWEBHU
UKUHLOLWA NGOKWEMIGAQO YECANDELO LESHUMI ELINESIHLANU 15 (1)(a)(i):	
<p>DOLFYN DI/R/514/2/7 enomhla we 16 Meyi 2006</p> <p>DRAMA DI/SDCI/DCIC/R/514/2/4 enomhla we 26 Septemba 2011</p> <p>DUIKER DI/R/202/3/7 enomhla we 21 Novemba 2001</p> <p>ENDURE DI/SDCO/DCIC/R/514/2/7/ enomhla ka Janyuwari 2010</p> <p>EXCITE DI/R/514/2/7/ enomhla we 16 Meyi 2006 DI/SDCO/DCIC/R/514/2/7/ enomhla ka Janyuwari 2010</p> <p>FIREWOOD DI/DCI/DCIM/R/202/3/7/ enomhla we 18 Janyuwari 2008 DI/SDCI/DCIC/R/514/2/7/ enomhla we 31 Janyuwari 2012</p> <p>FISANT DI/DCI/DCIC/R/514/2/7 enomhla we 31 Janyuwari 2011</p> <p>FLAMIGO DI/R/514/2/7 enomhla we 27 Okthowubha 2005</p> <p>FLEMISH DI/DCI/DCIC/R/514/2/7 enomhla we 31 Janyuwari 2011</p> <p>FOCUS DI/SDCI/DCIC/R/514/2/7 enomhla we 31 Janyuwari 2012 DI/SDCI/DCIC/R/514/2/7 enomhla we 13 Meyi 2013</p> <p>GLAZIER DI/SDCI/DCIC/R/514/2/7 enomhla ka Epreli 2015</p> <p>GOMMA DI/R/514/2/7 enomhla we 16 Meyi 2006</p> <p>HANSAK DI/R/514/2/7 enomhla we 16 Meyi 2006</p> <p>HILTI DI/SDCO/DCIC/R/514/2/7/ enomhla ka Janyuwari 2010</p> <p>HOENDER DI/DCI/DCIC/R/514/2/7 enomhla we 31 Janyuwari 2011</p> <p>HURRICANE DI/SDCI/DCIO/R/202/3/7 enomhla we 28 Julayi 2008</p> <p>JAVELIN DI/R/514/2/7 enomhla we 16 Meyi 2006</p> <p>JERRY DI/R/514/2/7 enomhla we 16 Meyi 2006</p> <p>JULIET DI/SDCI/DCIC/R/514/2/4 enomhla we 31 Janyuwari 2011</p> <p>KAKEBEEN DI/R/514/2/7 enomhla we 16 Meyi 2006</p> <p>KANEEL DI/R/514/2/7 enomhla we 16 Meyi 2006</p> <p>KATZEN DI/SDCI/DCIC/R/514/2/4 enomhla we 12 Okthowubha 2011</p> <p>KONTAK DI/DCI/DCIC/R/514/2/7 enomhla we 31 Janyuwari 2011</p> <p>KROPDUIF DI/R/514/2/7 enomhla we 16 Meyi 2006</p> <p>LARK DI/DCI/DCIC/R/514/2/7 enomhla we 31 Janyuwari 2011 DI/SDCI/DCIC/R/514/2/4 enomhla we 26 Septemba 2011</p>	

UKUCHAZWA KWENDAWO ZAMAXWEBHU AVELE AFUMANEKE NGOKWEMIGAQO YECANDELO LESHUMI ELINESIHLANU (15 (1) (a) YOMTHETHO WOKUKHUTHAZWA KWEMVUME KULWAZI, 2000	INDELELA YOKUFUMANA IMVUME KUMAXWEBHU
UKUHLOLWA NGOKWEMIGAQO YECANDELO LESHUMI ELINESIHLANU 15 (1)(a)(i):	
<p>LILAC DI/R/514/2/7 enomhla we 16 Meyi 2006 DI/SDCI/DCIC/R/514/2/4 enomhla we 31 Janyuwari 2012</p> <p>LINGER DI/SDCO/DCIC/R/514/2/7/ enomhla ka Janyuwari 2010</p> <p>MAGNETO DI/R/514/2/7 enomhla we 16 Meyi 2006</p> <p>MAGNETO (EGRET II) DI/SDCI/DCIC/R/514/2/4 enomhla we 26 Septemba 2011</p> <p>MAKRO DI/R/514/2/7 enomhla we 16 Meyi 2006</p> <p>MARKOTTER DI/SDCI/DCIC/R/514/2/4 enomhla we 26 Septemba 2011</p> <p>MEEBOS DI/R/514/2/7 enomhla we 16 Meyi 2006</p> <p>MERLYN DI/R/514/2/7 enomhla we 25 Ogasti 2003 DI/SDCO/DCIC/R/514/2/7/ enomhla ka Janyuwari 2010 DI/SDCI/DCIC/R/514/2/7 enomhla we 15 Ogasti 2012</p> <p>MILA-PIKI DI/SDCI/DCIC/R/514/2/4 enomhla we 26 Septemba 2011</p> <p>MODULAR DI/SDCO/DCIC/R/514/2/7/ enomhla ka Janyuwari 2010</p> <p>MOTIVE DI/SDCO/DCIC/R/514/2/7/ enomhla ka Janyuwari 2010</p> <p>NIGEL DI/SDCI/DCIC/R/514/2/4 enomhla we 31 Janyuwari 2012</p> <p>OORTREK DI/R/514/2/7 enomhla we 16 Meyi 2006</p> <p>OPEET DI/R/514/2/7 enomhla we 16 Meyi 2006</p> <p>OPSAAL DI/R/514/2/7 enomhla we 16 Meyi 2006</p> <p>OTTER DI/R/202/3/7 enomhla we 21 Novemba 2001</p> <p>OUTLINE DI/DCI/DCIC/R/514/2/7 enomhla we 31 Janyuwari 2011</p> <p>PACT DI/SDCO/DCIC/R/514/2/7/ enomhla ka Janyuwari 2010</p> <p>PAROOL DI/SDCI/DCIC/R/514/2/4 enomhla we 26 Septemba 2011 DI/SDCI/DCIC/R/514/2/7 enomhla we 15 Ogasti 2012</p> <p>PEBBLE DI/SDCI/DCIC/R/514/2/7 enomhla ka Epreli 2015</p> <p>PRONE DI/SDCO/DCIC/R/514/2/7/ enomhla ka Janyuwari 2010</p> <p>PROTEA DI/SDCO/DCIC/R/514/2/7/ enomhla ka Janyuwari 2010 DI/DCI/DCIC/R/514/2/7 enomhla we 31 Janyuwari 2011</p> <p>REINDEER DI/R/202/3/7/ enomhla we 11 Matshi 2002 DI/SDCO/DCIC/R/514/2/7/ enomhla ka Janyuwari 2010</p>	

<p>UKUCHAZWA KWENDAWO ZAMAXWEBHU AVELE AFUMANEKE NGOKWEMIGAQO YECANDELO LESHUMI ELINESIHLANU (15 (1) (a) YOMTHETHO WOKUKHUTHAZWA KWEMVUME KULWAZI, 2000</p>	<p>INDLELA YOKUFUMANA IMVUME KUMAXWEBHU</p>
<p>UKUHLOLWA NGOKWEMIGAQO YECANDELO LESHUMI ELINESIHLANU 15 (1)(a)(i):</p>	
<p>REKSTOK DI/SDCI/DCIM/R/202/3/7 enomhla we 28 Julayi 2008 DI/SDCO/DCIC/R/514/2/7/ enomhla ka Janyuwari 2010 DI/SDCI/DCIC/R/514/2/4 enomhla we 15 Epreli 2011 DI/SDCI/DCIC/R/514/2/4 enomhla we 31 Janyuwari 2012</p> <p>RIEMPIES DI/R/514/2/7 enomhla we 16 Meyi 2006</p> <p>RUGGRAAT DI/SDCI/DCIC/R/514/2/4 enomhla we 26 Septemba 2011 DI/SDCI/DCIC/R/514/2/4 enomhla we 31 Janyuwari 2012</p> <p>SAFRAAN DI/SDCI/DCIC/R/514/2/4 enomhla we 15 Epreli 2011</p> <p>ZAIRE GALLERY DI/SDCI/DCIC/R/514/2/7 enomhla ka Epreli 2015</p> <p>ZAIRE-GALLERY-IVORY DI/SDCI/DCIC/R/514/2/7 enomhla ka Epreli 2015</p> <p>ZAIRE-PUTHON DI/SDCI/DCIC/R/514/2/7 enomhla ka Epreli 2015</p> <p>ZAIRE-TADPOLE DI/SDCI/DCIC/R/514/2/7 enomhla ka Epreli 2015</p> <p>ZEPELIN DI/R/514/2/7 enomhla we 16 Meyi 2006</p> <p><u>Amaxwebhu aselugcinweni kwiSebe lezokhuselo anento yokwenza nenkqubo okanye imisebenzi eyasungulwa ukuyotsho nge 31 zika Disemba 1969.</u></p> <p>Korean War 1950-1953 1st World War 1914-1915 2nd World War 1939-1945 Ukusungulwa koMkhosi obumbeneyo 1912</p> <p>Imbalelwano ezohlulwe ngegama elithi ayivumelekanga nakubani ezasungulwa ngoko ukuquka kude kube nge 31 zika Disemba 1975 zibanjelwe kwindawo zokugcina amaxwebhu zoKhuselo.</p>	
<p>UKUCHAZWA KWENDAWO ZAMAXWEBHU AVELE AFUMANEKE NGOKWEMIGAQO YECANDELO LESHUMI ELINESIHLANU (15 (1)(a)) YOMTHETHO WEENKULUNGWANE EZIMBINI WOKUKHUTHAZWA KWEMVUME KULWAZI</p>	<p>INDLELA YOKUFUMANA IMVUME KUMAXWEBHU</p>
<p>UKUTHENGISWA NGOKWEMIGAQO YECANDELO LESHUMI ELINESIHLANU 15 (1)(a)(ii):</p>	
<p>Ayikho/ ayingeni</p>	
<p>UKUCHAZWA KWENDAWO ZAMAXWEBHU AVELE AFUMANEKE NGOKWEMIGAQO YECANDELO LESHUMI ELINESIHLANU (15 (1)(a)) YOMTHETHO WEENKULUNGWANE EZIMBINI WOKUKHUTHAZWA KWEMVUME KULWAZI</p>	<p>INDLELA YOKUFUMANA IMVUME KUMAXWEBHU</p>
<p>UKUKHUPHELA/ UKUKOPA NGOKWEMIGAQO YECANDELO LESHUMI ELINESIHLANU 15 (1)(A)(ii):</p>	
<p><u>Upapasho lweSebe</u></p> <ol style="list-style-type: none"> Umtetho woKhuselo 1957 umtetho ongunombolo 44 ka 1957 njengoko ulungisiwe. iWhite paper kwezoKhuselo (1996) ukuqwalaselwa kwakhona kwZokhuselo (2014) imiyalelo okanye imigaqo nkqubo yeSebe lezoKhuselo. lingxelo zonyaka zeSebe lezoKhuselo Isicangciso seSebe lezoKhuselo. Izaziso zolwazi zeSebe lezoKhuselo 	<p>Onke amaxwebhu angakhutshelwa/ anagakotshwa okanye angaphinde enziwe ayakwenziwa ngokwentlawulo leyo ecacisiwe kwisigaba seshumi elinanye sale ncwadana.</p> <p>Ukuze kugcineke amaphepha anobuzaza, uphando lwalamaxwebhu kungasetyenziswa izithwebuli zelixesha kunye nezikena ukwenza amaxwebhu.akukho zintlawulo kumphandi. (Abasebenzi bendawo yogcino maxwebhu beSebe lezoKhuselo baya kubonisa ukuba leliph na uxwebhu elona linobuzaza)</p>

UKUCHAZWA KWENDAWO ZAMAXWEBHU AVELE AFUMANEKE NGOKWEMIGAQO YECANDELO LESHUMI ELINESIHLANU (15 (1)(a)) YOMTHETHO WEENKULUNGWANE EZIMBINI WOKUKHUTHAZWA KWEMVUME KULWAZI	INDLELA YOKUFUMANA IMVUME KUMAXWEBHU
UKUKHUPHELA/ UKUKOPA NGOKWEMIGAQO YECANDELO LESHUMI ELINESIHLANU 15 (1)(A)(ii):	
<p><u>Izaziso zothethathethano kunye nentsebenziswano</u></p> <ul style="list-style-type: none"> i. Ad Astra 1980-1996 ii. Kommondo 1949-1970 iii. Militaria 1969-1996 iv. Scientia Militaria 1997-2000 v. Nongqai 1913-1959 vi. Nyala 1971-1994 vii. Paratus 1970-1994 viii. Salut 1994-2000 ix. SA Defence Force Review 1985-1991 x. SA Soldier 2001-2015 <p><u>Amaxwebhu aguka uMkhosi woKhuselo woMzantsi Afrika kunye nemisebenzi yawo</u></p> <p>AGREE DI/SDCIC/R/514 enomhla we 12 Oktowubha 2011 DI/SDCI/DCIC/R/514/2/7/ enomhla ka Apreli 2015</p> <p>ALET/SOUTHGO-TONGA DI/DCI/DCIC/R/514/2/7 enomhla we 31 Janyuwari 2011</p> <p>ALTAR DI/SDCI/R/514/2/4 enomhla we 26 Septemba 2011</p> <p>ALWYN DI/R/514/2/7 enomhla we 16 Meyi 2006</p> <p>ASKARI DI/R/514/2/7 enomhla we 27 Oktowubha 2005 DI/SDCI/DCIM/R/514/2/7 enomhla we 27 Juni 2008 DI/SDCO/DCIC/R/514/2/7 enomhla ka Janyuwari 2010 DI/SDCI/DCIC/R/514/2/7 enomhla ka Janyuwari 2012</p> <p>ASTRIX DI/SDCI/R/514/2/4 enomhla we 26 Septemba 2011</p> <p>BARGAIN DI/SDCI/DCIC/R/514/2/7 enomhla we 15 Ogasti 2012</p> <p>BARUTA DI/SDCI/DCIC/R/514/2/7 enomhla we 30 meyi 2014</p> <p>BEERPUT DI/R/514/2/7 enomhla we 16 Meyi 2006</p> <p>BLOUWILDEBEEES DI/R/202/3/7 enomhla we 21 Novemba 2001</p> <p>BOLSON DI/R/514/2/7 enomhla we 16 Meyi 2006</p> <p>BOLSTER DI/SDCI/DCIC/R/514/2/7 enomhla ka Epreli 2015</p> <p>BOMBAY DI/SDCI/DCIC/R/514/2/7 enomhla we 15 Ogasti 2012</p> <p>BOOTLACE DI/SDCI/DCIC/R/514/2/4 enomhla we 15 Epreli 2011</p> <p>BORAX DI/R/514/2/7 enomhla we 16 Meyi 2006 DI/SDCI/DCIC/R/514/2/7 enomhla we 15 Ogasti 2012</p> <p>BOWLER DI/SDCI/DCIC/R/514/2/7 enomhla we 15 Ogasti 2012</p> <p>BRUILOF DI/R/514/2/1/1 enomhla we 11 Okthowbha 2000</p>	<p>Ikopi ezithwetyulweyo zefoto ziyafumaneka kwindawo zokugcina amaxwebhu kwiSebe lezoKhuselo kubaphandi nge ponti ezimbini neshumi (R5.00) ifoto inye.</p>

<p>UKUCHAZWA KWENDAWO ZAMAXWEBHU AVELE AFUMANEKE NGOKWEMIGAQO YECANDELO LESHUMI ELINESIHLANU (15 (1)(a)) YOMTHETHO WEENKULUNGWANE EZIMBINI WOKUKHUTHAZWA KWEMVUME KULWAZI</p>	<p>INDELELA YOKUFUMANA IMVUME KUMAXWEBHU</p>
<p>UKUKHUPHELA/ UKUKOPA NGOKWEMIGAQO YECANDELO LESHUMI ELINESIHLANU 15 (1)(A)(ii):</p>	
<p>BUDGE DI/R/514/2/7 enomhla we 16 Meyi 2006 DI/SDCI/DCIC/R/514/2/4 enomhla we 15 Epreli 2011 DI/SDCI/DCIC/R/514/2/7 enomhla we 23 Epreli 2012 DI/SDCI/DCIC/R/514/2/7 enomhla we 18 Juni 2012 DI/SDCI/DCIC/R/514/2/7 enomhla we 15 Ogasti 2012</p> <p>CANNABIS DI/SDCI/DCIC/R/514/2/4 enomhla we 15 Epreli 2011</p> <p>CARROT DI/SDCI/DCIC/R/514/2/4 enomhla we 15 Epreli 2011</p> <p>CASTILLO DI/R/514/2/7 enomhla we 16 Ogasi 2006</p> <p>CINEMA DI/R/514/2/7 enomhla we 16 Meyi 2006 DI/SDCI/DCIC/R/514/2/4 enomhla we 26 Septemba 2011 DI/SDCI/DCIC/R/514/2/7 enomhla we 31 Janyuwari 2012</p> <p>COLOSSEUM DI/DCI/DCIC/R/514/2/7 enomhla we 31 Janyuwari 2011</p> <p>COLOSSUS DI/SDCI/DCIC/R/514/2/4 enomhla we 15 Epreli 2011</p> <p>COMBAT DI/SDCI/DCIC/R/514/2/7 enomhla we 15 Ogast 2012</p> <p>COTTON DI/SDCI/DCIC/R/514/2/4 enomhla we 15 Epreli 2011</p> <p>CUCUMBER DI/SDCI/DCIC/R/514/2/4 enomhla we 26 Septemba 2011</p> <p>CUPID DI/R/514/2/7 enomhla we 16 Meyi 2006 DI/SDCI/DCIC/R/514/2/7 enomhla we 15 Ogasti 2012</p> <p>DAISY DI/SDCO/DCIC/R/514/2/7 enomhla ka Janyuwari 2010</p> <p>DINGO DI/SDCI/DCIC/R/514/2/7 enomhla we 23 Epreli 2012</p> <p>DISA/KASALA DI/SDCI/DCIC/R/514/2/4 enomhla we 26 Septemba 2011</p> <p>DOEMPA DI/SDCI/DCIC/R/514/2/4 enomhla we 26 Septemba 2011</p> <p>DOLFYN DI/R/514/2/7 enomhla we 16 Meyi 2006</p> <p>DRAMA DI/SDCI/DCIC/R/514/2/4 enomhla we 26 Septemba 2011</p> <p>DUIKER DI/R/202/3/7 enomhla we 21 Novemba 2001</p> <p>ENDURE DI/SDCO/DCIC/R/514/2/7/ enomhla ka Janyuwari 2010</p> <p>EXCITE DI/R/514/2/7/ enomhla we 16 Meyi 2006 DI/SDCO/DCIC/R/514/2/7/ enomhla ka Janyuwari 2010</p> <p>FIREWOOD DI/DCI/DCIM/R/202/3/7/ enomhla we 18 Janyuwari 2008 DI/SDCI/DCIC/R/514/2/7/ enomhla we 31 Janyuwari 2012</p> <p>FISANT DI/DCI/DCIC/R/514/2/7 enomhla we 31 Janyuwari 2011</p>	

UKUCHAZWA KWENDAWO ZAMAXWEBHU AVELE AFUMANEKE NGOKWEMIGAQO YECANDELO LESHUMI ELINESIHLANU (15 (1)(a)) YOMTHETHO WEENKULUNGWANE EZIMBINI WOKUKHUTHAZWA KWEMVUME KULWAZI	INDELELA YOKUFUMANA IMVUME KUMAXWEBHU
UKUKHUPHELA/ UKUKOPA NGOKWEMIGAQO YECANDELO LESHUMI ELINESIHLANU 15 (1)(A)(ii):	
<p>FLAMIGO DI/R/514/2/7 enomhla we 27 Okthowubha 2005</p> <p>FLEMISH DI/DCI/DCIC/R/514/2/7 enomhla we 31 Janyuwari 2011</p> <p>FOCUS DI/SDCI/DCIC/R/514/2/7 enomhla we 31 Janyuwari 2012 DI/SDCI/DCIC/R/514/2/7 enomhla we 13 Meyi 2013</p> <p>GLAZIER DI/SDCI/DCIC/R/514/2/7 enomhla ka Epreli 2015</p> <p>GOMMA DI/R/514/2/7 enomhla we 16 Meyi 2006</p> <p>HANDESAK DI/R/514/2/7 enomhla we 16 Meyi 2006</p> <p>HILTI DI/SDCO/DCIC/R/514/2/7/ enomhla ka Janyuwari 2010</p> <p>HOENDER DI/DCI/DCIC/R/514/2/7 enomhla we 31 Janyuwari 2011</p> <p>HURRICANE DI/SDCI/DCIO/R/202/3/7 enomhla we 28 Julayi 2008</p> <p>JAVELIN DI/R/514/2/7 enomhla we 16 Meyi 2006</p> <p>JERRY DI/R/514/2/7 enomhla we 16 Meyi 2006</p> <p>JULIET DI/SDCI/DCIC/R/514/2/4 enomhla we 31 Janyuwari 2011</p> <p>KAKEBEEN DI/R/514/2/7 enomhla we 16 Meyi 2006</p> <p>KANEEL DI/R/514/2/7 enomhla we 16 Meyi 2006</p> <p>KATZEN DI/SDCI/DCIC/R/514/2/4 enomhla we 12 Okthowubha 2011</p> <p>KONTAK DI/DCI/DCIC/R/514/2/7 enomhla we 31 Janyuwari 2011</p> <p>KROPDUIF DI/R/514/2/7 enomhla we 16 Meyi 2006</p> <p>LARK DI/DCI/DCIC/R/514/2/7 enomhla we 31 Janyuwari 2011 DI/SDCI/DCIC/R/514/2/4 enomhla we 26 Septemba 2011</p> <p>LILAC DI/R/514/2/7 enomhla we 16 Meyi 2006 DI/SDCI/DCIC/R/514/2/4 enomhla we 31 Janyuwari 2012</p> <p>LINGER DI/SDCO/DCIC/R/514/2/7/ enomhla ka Janyuwari 2010</p> <p>MAGNETO DI/R/514/2/7 enomhla we 16 Meyi 2006</p> <p>MAGNETO (EGRET II) DI/SDCI/DCIC/R/514/2/4 enomhla we 26 Septemba 2011</p> <p>MAKRO DI/R/514/2/7 enomhla we 16 Meyi 2006</p> <p>MARKOTTER DI/SDCI/DCIC/R/514/2/4 enomhla we 26 Septemba 2011</p> <p>MEEBOS DI/R/514/2/7 enomhla we 16 Meyi 2006</p>	

<p>UKUCHAZWA KWENDAWO ZAMAXWEBHU AVELE AFUMANEKE NGOKWEMIGAQO YECANDELO LESHUMI ELINESIHLANU (15 (1)(a)) YOMTHETHO WEENKULUNGWANE EZIMBINI WOKUKHUTHAZWA KWEMVUME KULWAZI</p>	<p>INDLELA YOKUFUMANA IMVUME KUMAXWEBHU</p>
<p>UKUKHUPHELA/ UKUKOPA NGOKWEMIGAQO YECANDELO LESHUMI ELINESIHLANU 15 (1)(A)(ii):</p>	
<p>MERLYN DI/R/514/2/7 enomhla we 25 Ogasti 2003 DI/SDCO/DCIC/R/514/2/7/ enomhla ka Janyuwari 2010 DI/SDCI/DCIC/R/514/2/7 enomhla we 15 Ogasti 2012</p> <p>MILA-PIKI DI/SDCI/DCIC/R/514/2/4 enomhla we 26 Septemba 2011</p> <p>MODULAR DI/SDCO/DCIC/R/514/2/7/ enomhla ka Janyuwari 2010</p> <p>MOTIVE DI/SDCO/DCIC/R/514/2/7/ enomhla ka Janyuwari 2010</p> <p>NIGEL DI/SDCI/DCIC/R/514/2/4 enomhla we 31 Janyuwari 2012</p> <p>OORTREK DI/R/514/2/7 enomhla we 16 Meyi 2006</p> <p>OPEET DI/R/514/2/7 enomhla we 16 Meyi 2006</p> <p>OPSAAL DI/R/514/2/7 enomhla we 16 Meyi 2006</p> <p>OTTER DI/R/202/3/7 enomhla we 21 Novemba 2001</p> <p>OUTLINE DI/DCI/DCIC/R/514/2/7 enomhla we 31 Janyuwari 2011</p> <p>PACT DI/SDCO/DCIC/R/514/2/7/ enomhla ka Janyuwari 2010</p> <p>PAROOL DI/SDCI/DCIC/R/514/2/4 enomhla we 26 Septemba 2011 DI/SDCI/DCIC/R/514/2/7 enomhla we 15 Ogasti 2012</p> <p>PEBBLE DI/SDCI/DCIC/R/514/2/7 enomhla ka Epreli 2015</p> <p>PRONE DI/SDCO/DCIC/R/514/2/7/ enomhla ka Janyuwari 2010</p> <p>PROTEA DI/SDCO/DCIC/R/514/2/7/ enomhla ka Janyuwari 2010 DI/DCI/DCIC/R/514/2/7 enomhla we 31 Janyuwari 2011</p> <p>REINDEER DI/R/202/3/7/ enomhla we 11 Matshi 2002 DI/SDCO/DCIC/R/514/2/7/ enomhla ka Janyuwari 2010</p> <p>REKSTOK DI/SDCI/DCIM/R/202/3/7 enomhla we 28 Julayi 2008 DI/SDCO/DCIC/R/514/2/7/ enomhla ka Janyuwari 2010 DI/SDCI/DCIC/R/514/2/4 enomhla we 15 Epreli 2011 DI/SDCI/DCIC/R/514/2/4 enomhla we 31 Janyuwari 2012</p> <p>RIEMPIES DI/R/514/2/7 enomhla we 16 Meyi 2006</p> <p>RUGGRAAT DI/SDCI/DCIC/R/514/2/4 enomhla we 26 Septemba 2011 DI/SDCI/DCIC/R/514/2/4 enomhla we 31 Janyuwari 2012</p> <p>SAFRAAN DI/SDCI/DCIC/R/514/2/4 enomhla we 15 Epreli 2011</p> <p>ZAIRE GALLERY DI/SDCI/DCIC/R/514/2/7 enomhla ka Epreli 2015</p> <p>ZAIRE-GALLERY-IVORY DI/SDCI/DCIC/R/514/2/7 enomhla ka Epreli 2015</p>	

<p>UKUCHAZWA KWENDAWO ZAMAXWEBHU AVELE AFUMANEKE NGOKWEMIGAQO YECANDELO LESHUMI ELINESIHLANU (15 (1)(a)) YOMTHETHO WEENKULUNGWANE EZIMBINI WOKUKHUTHAZWA KWEMVUME KULWAZI</p>	<p>INDLELA YOKUFUMANA IMVUME KUMAXWEBHU</p>
<p>UKUKHUPHELA/ UKUKOPA NGOKWEMIGAQO YECANDELO LESHUMI ELINESIHLANU 15 (1)(A)(ii):</p>	
<p>ZAIRE-PUTHON DI/SDCI/DCIC/R/514/2/7 enomhla ka Epreli 2015</p> <p>ZAIRE-TADPOLE DI/SDCI/DCIC/R/514/2/7 enomhla ka Epreli 2015</p> <p>ZEPELIN DI/R/514/2/7 enomhla we 16 Meyi 2006</p> <p><u>Amaxwebhu aselugcinweni kwiSebe lezokhuselo anento yokwenza nenkqubo okanye imisebenzi eyasungulwa ukuyotsho nge 31 zika Disemba 1969.</u></p> <p>Korean War 1950-1953 1st World War 1914-1915 2nd World War 1939-1945 Ukusungulwa koMkhosi obumbeneyo 1912</p> <p>Imbalelwano ezohlulwe ngegama elithi ayivumelekanga nakubani ezasungulwa ngoko ukuquka kude kube nge 31 zika Disemba 1975 zibanjelwe kwindawo zokugcina amaxwebhu zoKhuselo.</p>	
<p>UKUCHAZWA KWENDAWO ZAMAXWEBHU AVELE AFUMANEKE NGOKWEMIGAQO YECANDELO LESHUMI ELINESIHLANU (15 (1)(a)) YOMTHETHO WEENKULUNGWANE EZIMBINI WOKUKHUTHAZWA KWEMVUME KULWAZI</p>	<p>INDLELA YOKUFUMANA IMVUME KUMAXWEBHU</p>
<p>AFUMANEKA NGAPHANDLE KWENTLAWULO NGOKWEMIGAQO YECANDELO LESHUMI ELINESIHLANU 15 (1)(A)(iii):</p>	
<p><u>Upapasho lweSebe</u></p> <ol style="list-style-type: none"> Umthetho woKhuselo 1957 umthetho ongunombolo 44 ka 1957 njengoko ulungisiwe. iWhite paper kwezoKhuselo (1996) ukuqwalaselwa kwakhona kwZokhuselo (2014) lingxelo zonyaka zeSebe lezoKhuselo Isicangciso seSebe lezoKhuselo. Izaziso zolwazi zeSebe lezoKhuselo <p><u>Izaziso zothethathethano kunye nentsebenziswano:</u> Incwadi yamajoni oMzantsi Afrika ka 2001-2015.</p>	<p>Upapasho lungafumaneka umntu azithabathele lona kwikhasi lonxibelelwano leSebe lezoKhuselo kule dilesi www.dod.mil.za</p>

16. Ubuchule bokuphanda

- Onke amaxwebhu angazuzeka kumagumbi okufundela kwindawo zogcino maxwebhu kwiSebe lezoKhuselo phantsi kwemiqathango eqinisekisa ukungonakaliswa kwawo elugcinweni. Amaxwebhu agciniweyo kwiSebe lezoKhuselo afumaneka phantsi kwezigaba zowiso mthetho, kuquka umthetho wokukhuthazwa kwemvume kulwazi umthetho ongunombolo wesibini weenkulungwane ezimbini (2 of 2000). Umthetho ongunombolo 84 ka 1982 wokukhuselwa kwamaxwebhu kunye nomthetho ongu nombolo 43 ka 1996 aphinde waqwalaselwa onguwona onguthetho welizwe wenkonzo zokugcinwa kwamaxwebhu eMzantsi Afrika.

- b. Izixhobo ezizezokufumana amaxwebhu okanye ushicilelo ezikhona kwiSebe lezoKhuselo kwiindawo zokugcina amaxwebhu zenziwe kukudityaniswa luluhlu lamaphepha. Ukuchazwa koluhlu ngalinye kuhambelana nalombumba yogcino umzekelo imbumba yengqonyela engunombolo 5. uluhlu olunenombolo engaphezu ko 2000 line nombolo yereference yefayile, echaza umhla wefayile kwimbumba ngokukhethekileyo. Olu luhlu luyakrweywa ukuze lufumane uxwebhu ngokukhethekileyo.

17. Imvume kunye nentlawulo. Amaxwebhu aselugcinweni ayafumaneka ukuze ahlolwe kwindawo zokugcina kwiSebe lezoKhuselo futhi (ukuba imeko yoxwebhu elilelona iyavuma) ukukhutshelwa kwalo/ ikopi zingenziwa zize zithengwe ngentlawulo echaziweyo ye senti ezingamashumi amathandathu iphepha elilingana nelencwadi A4.

18. Inkcukacha zonxibelelwano zendawo yokugcina amaxwebhu ze Sebe lezoKhuselo

Umsebenzi: ISebe lezoKhuselo
 Idilesi yeposi: Department of Defence Archives
 Private bag X 289
 Pretoria
 0001
 Inombolo yomnxeba: (012) 339 4600
 Inombolo yefekisi: (012) 339 4631
 Idilesi ye imeyile: sandfdoc@mweb.co.za

19. Inkonzo ezifumanekayo kwindawo zokugcina amaxwebhu kwiSebe lezoKhuselo nokuba ifumaneka njani imvume yokufikelela kwezi nkonzo

- a. Ngokudibanisa unikeze amaxwebhu ekusebenza kwakho kunye neembalelwano zokusebenza kwakho ukuze kuqwalaselwe ngamalungu eSebe lezoKhuselo asasebenzayo okanye ngulowo umtyumbela uba abe ngokumeleyo wawube uswelekile.
- b. Unikeze ikopi zamaxwebhu ezikhutshelwe kumaxwebhu abasebenzi njenge ngxelo zezifundwana, incwadi yemvume yokuqhuba yoMkhosi, imiyolelo, njalonjalo kumalungu eSebe lezoKhuselo asasebenzayo.
- c. Ukunikezwa kweembasa zemfazwe eMzantsi Afrika. Amalungu akulungeleyo okanye abo babanyule endaweni zabo xa sebeswelekile bangafaka isicelo sezombasa zeMfazwe yeLizwe yokuqala, iMfazwe yeLizwe yesibini kunye nemfazwe yaMaKoriya. Ukukhutshwa kwazo okokuqala akunantlawulo kodwa xa sezikhutshwa okwesibini kuya kufuneka intlawulo.
- d. Nangona nje ezi nkonzo zifumaneka ngaphandle kwentlawulo kodwa xa sele ubani ezifumana okwesibini okanye uzenzelwa okwesibini intlawulo iyakufuneka njengoku kucacisiwe kwisigaba seshumi elinanye salencwadana.

- e. ukufumana imvume kwinkonzo kwindawo zokugcina amaxwebhu zeSebe lezoKhuselo, izicelo zingaqhagamshelwa kwinkcukacha zonxibelelwano ezibhaliweyo apha ngasentla.

IINDIDI ZAMAXWEBHU

20. Isalathiso sendlela yocino maxwebhu kwiSebe lezoKhuselo

Inombolo	Ireferensi yefayile	Ukuchazwa
	a	b
1	100	ABASEBENZI. (olu luhlu lamaxwebhu lwenziwe ziireferensi ezidibanisa zonke izinto ezimalunga nokulawulwa nokunakekelwa kwabasebenzi kwiSebe lezoKhuselo. Oku kuquka ukukhangela abazoqashwa, ukonyula kunye nokuqasha, ukufunda, ukuqeqesha kunye nokuphuhlisa; ukucwangcisa ikamva lemfundo, ukuhlawula kunye nokuhlolwa kwezinga lokusebenza; iziqu zoMkosi welizwe wase Mzantsi Afrika kunye nokubekwa kweziqhu, amathuba alinganayo, nemicimbi kamasilingane sifane, izihlwayo, ubulungisa boMkhosi kunye nemicimbi yabasebenzi; ukuyeka umsebenzi, ukugxothwa kunye nemicimbi yemihlala phantsi).
2	101	Manpower Planning
3	102	Manpower Provisioning
4	103	Personnel Development
5	104	Maintenance of Personnel
6	105	Utilisation of Personnel
7	106	Control of Personnel
8	107	Disposition of Personnel
9	200	UBUNGOQONDONGOQONDO. (olu luhlu lamaxwebhu lubhekiselele kubungqondongqondo boMkhosi. Oku kuquka imigaqo nkqubo yongqondongqondo boMkhosi, ukugadwa nokuvikelwa kwabantu, ulwazi kunye nenkqubo, ukufunyanwa kolwazi ngendlela ezininzi; ukubulelwa ngobungqondongqondo, ukunikezwa kwamabhaso, iingxelo zongqondongqondo kunye nemicimbi equka ubungqondongqondo bamanye amaSebe kaRhulumente.
10	201	Country Intelligence
11	202	Security
12	203	Collection of Intelligence
13	204	Arrangement of Intelligence
14	205	Distribution of Intelligence
15	206	Foreign Representation in SA
16	207	Intelligence Returns and Reports
17	208	Interdepartmental Intelligence Affairs
18	300	INKQUBO. (olu uluhlu olubhekiselele kumaxwebhu enkqubo zoMkhosi. Iquka izinto ezininzi, indlela yokucwangcisa kunye nenkuthazo; ukuyalelwa komlo, ukuhlanganiswa nokuchithachithwa; ukuvumelana kunye nokungavumelani ngemilo, kunye nenkqubo ezikhethekileyo; uMkhosi womoya naManzi; inkqubo zokukhangela nokusindisa kunye nokuqeqesha ngokuzilolonga, ukuncedisa nokusebenzisana namanye amaziko namanye amazwe).
19	301	Appreciations
20	302	Force Level Planning and Force Development
21	303	Strategic Studies
22	304	Planning: Contingency, Mobilisation and Demobilisation
23	305	Operational Doctrines and Operational Preparedness and Effectiveness
24	306	Operational Planning
25	307	Role and Implementation of the SA National Defence Force
26	308	Training Exercises Demonstrations Camps and Bivouacs
27	309	Specific Operations
28	310	Special Operations
29	311	Assistance and Co-operations
30	312	Civil Defence
31	313	Air Defence
32	314	Air Support
33	315	Maritime Defence
34	316	Search and Rescue Services
35	317	Electronic Warfare
36	318	Telecommunications
37	319	Navigation
38	320	Naval Activities
39	321	Resolution of International Organisation
40	322	Survey and Mapping
41	323	Operational Photography
42	324	Operational Movements

Inombolo	Ireferensi yefayile	Ukuchazwa
	a	b
43	325	Vacant (Closed)
44	326	Violations
45	327	Borders
46	328	Communication Operations
47	329	National Key Points
48	330	Subversion
49	331	Treaties
50	400	UKUNIKA IKXASO EMKHOSINI. (olu luhlu lamaxwebhu liquka imicimbi yokunika inkxaso kwiSebe lezoKhuselo. Ngokukonke idibanisa inkqubo zoMkhosi kunye nophando, iindlela zokuzotywa kunye nokuphuhliswa, ukuzuza, ukugcina kunye nokukhupha ikwaquka iinkonzo zokuzuza nokubeka0.
51	401	Logistics Services
52	402	Logistical Management
53	403	Acquisition of Equipment and Supplies
54	404	Maintenance
55	405	Administration of Commodities
56	406	Control of Stores
57	407	Logistic Doctrines
58	408	System Management
59	500	ABAPHATHI BESEBE. (inkonzo lubambiswano oluquka lonke ulawulo lwesebe. Ezi nkonzo ziquka uniko myalelo nolawulo; ukulawulwa kweSebe okuquka ukusungulwa/ nokuchithwa kweziqo zoMkhosi; kunye nokucwangciswa ngemali kweSebe lezoKhuselo kunye nokuhlalutywa nokuhlolwa kwayo, imibhityozo kunye nemicimbi yamagugu, ukuphathwa kwamaxwebhu kunye nothethathethwano kunye nendlela ezimisweyo zobuchwepheshe zeSebe lezoKhuselo).
60	501	Command and Control
61	502	Organisational Control
62	503	Organisation and Work Study
63	504	Defence Budget
64	505	Defence Income and Expenditure
65	506	Auditing
66	507	Institutions and Funds
67	508	Parliamentary Enquiries
68	509	Ministerial Enquiries
69	510	Enquiries to C SANDF, Chiefs of Combat Services, Staff Divisions and Support Services
70	511	Public Relations, Media and Public Liaison, Communication
71	512	Ceremonial
72	513	Office Administration
73	514	Documentation Services
74	515	Language Services
75	516	Computer Services
76	517	Military Museums and Monuments
77	518	Publications
78	519	Circulars and Instructions of Non-SANDF Organisations
79	520	Visits and Movements of Persons, Aircraft and Ships
80	521	Committees, Commissions and Boards
81	522	Conferences, Congresses, Seminars, Symposiums and Meetings
82	523	Membership and Correspondence of Associations, Institutes and other
83	524	Personnel Systems
84	525	Intelligence Systems
85	526	Operational Systems
86	527	Logistic Systems
87	528	Departmental Management Systems

APPENDIX A

FORM A

REQUEST FOR ACCESS TO RECORD OF PUBLIC BODY
(Section 18(1) of the Promotion of Access to Information Act, 2000

(Act No. 2 of 2000))

[Regulation 6]

FOR DEPARTMENTAL USE

Reference number:

Request received by _____ (state rank,
name and surname of information officer/deputy information officer) on
(date) at _____ (place).

Request fee (if any): R

Deposit (if any): R

Access fee: R

SIGNATURE OF INFORMATION OFFICER/DEPUTY
INFORMATION OFFICER

A. Particulars of public body

The Information Officer/Deputy Information Officer:

B. Particulars of person requesting access to the record

- (a) *The particulars of the person who requests access to the record must be given below.*
(b) *The address and/or fax number in the Republic to which the information is to be sent, must be given.*
(c) *Proof of the capacity in which the request is made, if applicable, must be attached.*

Full names and surname:

Identity number:

Postal address:

Fax number:

Telephone number: _____ E-mail address:

Capacity in which request is made, when made on behalf of another person:

C. Particulars of person on whose behalf request is made

This section must be completed ONLY if a request for information is made on behalf of another person.

Full names and surname:

Identity number:

D. Particulars of record

- (a) *Provide full particulars of the record to which access is requested, including the reference number if that is known to you, to enable the record to be located.*
(b) *If the provided space is inadequate, please continue on a separate folio and attach it to this form. **The requester must sign all the additional folios.***

1. **Description of record or relevant part of the record:**

2. **Reference number, if available:**

3. **Any further particulars of record:**

E. Fees

- (a) *A request for access to a record, other than a record containing personal information about yourself, will be processed only after a **request fee** has been paid.*
(b) *You will be notified of the amount required to be paid as the request fee.*
(c) *The **fee payable for access** to a record depends on the form in which access is required and the reasonable time required to search for and prepare a record.*
(d) *If you qualify for exemption of the payment of any fee, please state the reason for exemption.*

Reason for exemption from payment of fees:

F. Form of access to record

If you are prevented by a disability to read, view or listen to the record in the form of access provided for in 1 to 4 below, state your disability and indicate in which form the record is required.

Disability:		Form in which record is required:	
<p>Mark the appropriate box with an X.</p> <p>NOTES:</p> <p>(a) Compliance with your request for access in the specified form may depend on the form in which the record is available.</p> <p>(b) Access in the form requested may be refused in certain circumstances. In such a case you will be informed if access will be granted in another form.</p> <p>(c) The fee payable for access to the record, if any, will be determined partly by the form in which access is requested.</p>			
1. If the record is in written or printed form:			
<input type="checkbox"/>	copy of record*	<input type="checkbox"/>	inspection of record
2. If record consists of visual images - (this includes photographs, slides, video recordings, computer-generated images, sketches, etc.):			
<input type="checkbox"/>	view the images	<input type="checkbox"/>	copy of the images*
<input type="checkbox"/>		<input type="checkbox"/>	transcription of the images*
3. If record consists of recorded words or information which can be reproduced in sound:			
<input type="checkbox"/>	listen to the soundtrack (audio cassette)	<input type="checkbox"/>	transcription of soundtrack* (written or printed document)
4. If record is held on computer or in an electronic or machine-readable form:			
<input type="checkbox"/>	printed copy of record*	<input type="checkbox"/>	printed copy of information derived from the record*
<input type="checkbox"/>		<input type="checkbox"/>	copy in computer readable form* (stiffy or compact disc)
*If you requested a copy or transcription of a record (above), do you wish the copy or transcription to be posted to you?			YES
			NO
Postage is payable.			
<i>Note that if the record is not available in the language you prefer, access may be granted in the language in which the record is available.</i>			
In which language would you prefer the record?			

G. Notice of decision regarding request for access

You will be notified in writing whether your request has been approved/denied. If you wish to be informed in another manner, please specify the manner and provide the necessary particulars to enable compliance with your request.

How would you prefer to be informed of the decision regarding your request for access to the record?

Signed at _____ this _____ day of _____ 20

SIGNATURE OF REQUESTER / PERSON ON
WHOSE BEHALF REQUEST IS MADE

APPENDIX B

FORM B

NOTICE OF INTERNAL APPEAL

(Section 75 of the Promotion of Access to Information Act, 2000 (Act No. 2 of 2000))

[Regulation 8]

STATE YOUR REFERENCE NUMBER:

A. Particulars of public body

The Information Officer/Deputy Information Officer:

B. Particulars of requester/third party who lodges the internal appeal

- (a) The particulars of the person who lodge the internal appeal must be given below.
(b) Proof of the capacity in which appeal is lodged, if applicable, must be attached.
(c) If the appellant is a third person and not the person who originally requested the information, the particulars of the requester must be given at C below.

Full names and surname:

Identity number:

Postal address:

Fax number: _____ Telephone number:

E-mail address:

Capacity in which an internal appeal on behalf of another person is lodged:

C. Particulars of requester

This section must be completed ONLY if a third party (other than the requester) lodges the internal appeal.

Full names and surname:

Identity number:

D. The decision against which the internal appeal is lodged

Mark the decision against which the internal appeal is lodged with an **X** in the appropriate box:

	Refusal of request for access
	Decision regarding fees prescribed in terms of section 22 of the Act
	Decision regarding the extension of the period within which the request must be dealt with in terms of section 26(1) of the Act
	Decision in terms of section 29(3) of the Act to refuse access in the form requested by the requester
	Decision to grant request for access

E. Grounds for appeal

*If the provided space is inadequate, please continue on a separate folio and attach it to this form.
You must sign all the additional folios.*

State the grounds on which the internal appeal is based:

State any other information that may be relevant in considering the appeal:

F. Notice of decision on appeal

You will be notified in writing of the decision on your internal appeal. If you wish to be informed in another manner, please specify the manner and provide the necessary particulars to enable compliance with your request.

State the manner:

Particulars of manner:

Signed at _____ this _____ day of _____ 20

SIGNATURE OF APPELLANT

FOR DEPARTMENTAL USE:

OFFICIAL RECORD OF INTERNAL APPEAL:

Appeal received on _____ (date) by _____ (state rank, name and surname of information officer/deputy information officer).

Appeal accompanied by the reasons for the information officer's/deputy information officer's decision and, where applicable, the particulars of any third party to whom or which the record relates, submitted by the information officer/deputy information officer on (date) to the relevant authority.

OUTCOME OF APPEAL:

DECISION OF INFORMATION OFFICER/DEPUTY INFORMATION OFFICER CONFIRMED/NEW
DECISION SUBSTITUTED

NEW DECISION:

RELEVANT AUTHORITY _____ DATE

RECEIVED BY THE INFORMATION OFFICER/DEPUTY INFORMATION OFFICER FROM THE
RELEVANT AUTHORITY ON (date):