



# defence

---

Department:

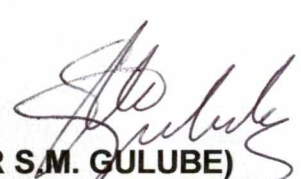
Defence

**REPUBLIC OF SOUTH AFRICA**

**KAROLO 14 YA MANYUWALE  
MATLAFATSO YA THODISO YA  
TLHAHISOLESERING**

## MANYUWALE YA MATLAFATSO YA THODISO YA THLAHISOLESERING HO LEFAPHA LA TSHIRELETSO

1. Molaotheo wa Rephaboliki ya Afrika Borwa, 1996 (Molao Nomoro 108 wa 1996), serapa 32, o bolela (1) hore mang kapa mang o na le tokelo ya thodiso ya (a) lesedi lefe kapa lefe le matsohong a Mmuso (2) hore ho lokela ho fetiswe molao wa naha ho matlafatso tokelo ena.
2. Molao wa Matlafatso ya Thodiso ya Tlhahisoleseding, 2000 (Molao No 2 wa 2000), o qadile ka Tlhakubele 2001. Kamora moo Lefapha la Tshireletso la qala melawana e mmedi e amehang; Molawana wa Phethahatso ya Molao wa Matlafatso ya Thodiso ya Tlhahisoleseding o qadile ka Tlhakubele 2001 mme Ditsela tsa Phethahatso ya Molao wa Matlafatso ya Thodiso ya Tlhahisoleseding wa 2000 wa qala ka Motsheanong 2002.
3. Ho latela Molao wa Matlafatso ya Thodiso ya Tlhahisoleseding le Melawana ya Lefapha la Tshireletso, Mongodi wa Tshireletso ke Ofisiri ya Tlhahisoleseding mme Letona la Tshireletso le Mekaubere ya Sesole ke Hlooho E Ikarabellang bitsong la Lefapha La Tshireletso. Ofisiri ya Mmuso wa Theknoloji le Lesedi o beilwe e le Motlats'a Ofisiri wa Tlhahisoleseding kahara Lefapha la Tshireletso mme o ikarabela ho Mongodi wa Tshireletso ya amohelang dikopo tsohle tsa tlhahisoleseding ho latela Molao wa Matlafatso ya Thodiso ya Tlhahisoleseding. Dihloho tsa Ditshebeletso le Makala ba beilwe ho ba Batlats'a Ofisiri wa Tlhahisoleseding mosebetsing wa bona mme ba tla thusa Ofisiri ya Mmuso wa Theknoloji le Tlhahisoleseding ho bokella lesedi le koptjwang ho latela Molao wa Matlafatso ya Thodiso ya Tlhahisoleseding.
4. Ho theilwe Komiti ya Matlafatso ya Thodiso ya Tlhahisoleseding ho eletsa Ofisiri ya Tlhahisoleseding mabapi le dikgothaletso tsa Batlats'a Ofisiri ya Tlhahisoleseding mosebetsing ka dikopo tsa tlhahisoleseding le ho thusa Ofisiri ya Tlhahisoleseding le Hlooho e Ikarabellang malebana le boipiletso/diapili.
5. Kgoro ya Matlafatso ya Thodiso ya Tlhahisoleseding e qadilwe ho ba mobokanyi ya shebanang le dikopo kaofela tsa tlhahisoleseding le tse ding tse amehelang. Kgoro ya Matlafatso ya Thodiso ya Tlhahisoleseding e tla thusa bakopi ka ditsela tse latelwang ha o kopa tlhahisoleseding.
6. Sepheo sa manyuwale ena ke ho bebofaletsa setjhaba ho bona tlhaloso ya direkoto tse matsohong a Lefapha la Tshireletso, mme e tshwere le ditsela tse latelwang ho thola tlhahisoleseding/direkoto tse fumaneheng hanghang kapa the

  
(DR S.M. GULUBE)

SECRETARY FOR DEFENCE: DEPARTMENT OF DEFENCE INFORMATION OFFICER

**DINGOTSWENG TSE KAHARE**

Mosebetsi le Mmopo wa Lefapha la Tshireletso	1
Pono	1
Mosebetsi	1
Tse Bakwang ke Tshireletso	1
Tse Phethiswang ke Tshireletso	1
Moralo o moholo wa Mmopo wa Botsamaisi ba Lefapha la Tshireletso	2
Tsebiso ya Boiteanyo	3
Tataiso ho Molao wa Matlafatso ya Thodiso ya Tlhahisoleseding	10
O ka fumana Tataiso ho Molao wa Matlafatso ya Thodiso ya Tlhahisoleseding kae na	10
O kena jwang ho Lefapha la Tshireletso hore o thole Tlhahisoleseding ho latela Molao wa Matlafatso ya Thodiso ya Tlhahisoleseding na	12
Tsela ya Kopo	12
Metjha ya Apile ya Kahare	14
Ho Thola Direkoto tse Tshwerweng ke Lefapha la Tshireletso	15
Ho di Bala	15
Ho di Reka	20
Ho esta Dikopi	20
Tse Fumanehang Mahala	26
Mefuta ya Direkoto	28

**DINTLHA HO LATELA SERAPA 14 SA MOLAO WA MATLAFATSO YA THODISO YA TLHAHISOLESEDING 2000 (MOLAO WA NOMORO 2 WA 2000)**

**MESEBETSI LE MMOPO WA LEFAPHA LA TSHIRELETSO**

1. Pono. Lefapha la Tshireletso le matlafatsa tshireletso e lokileng ya Afrika Borwa e demokrasing ho latela Molaotheo.

2. Mosebetsi. Lefapha la Tshireletso le ntsha le ho tsamaisa le ho hlophisa le ho sebedisa mekgwa ya tshireletso e bapaneng le ditlhoko tsa Afrika Borwa ka tayo ya Molaotheo, molao wa naha, le ho latela tshupo ya palamente le ketsamelao. Sena se etswa ka ho latela tsamaiso e makgethe, tlhophiso, boitokisetso le tshebediso ya mekgwa ya tshireletso e nyallanang le ditlhoko tsa Afrika Borwa tsa selehae le tse phatlalletseng le lefatshe.

3. Tse Bakwang ke Tshireletso. Tse bakwang ke Tshireletso di lebane le mabaka a nakwana a bakilweng ke ho fihlella katleho e ipeetsweng ke Lefapha:

- a. Rephaboliki ya Afrika Borwa e sireletsehile e bolokehile.
- b. Ho teng taolo e babatsehang ya tshireletso ke baahi.

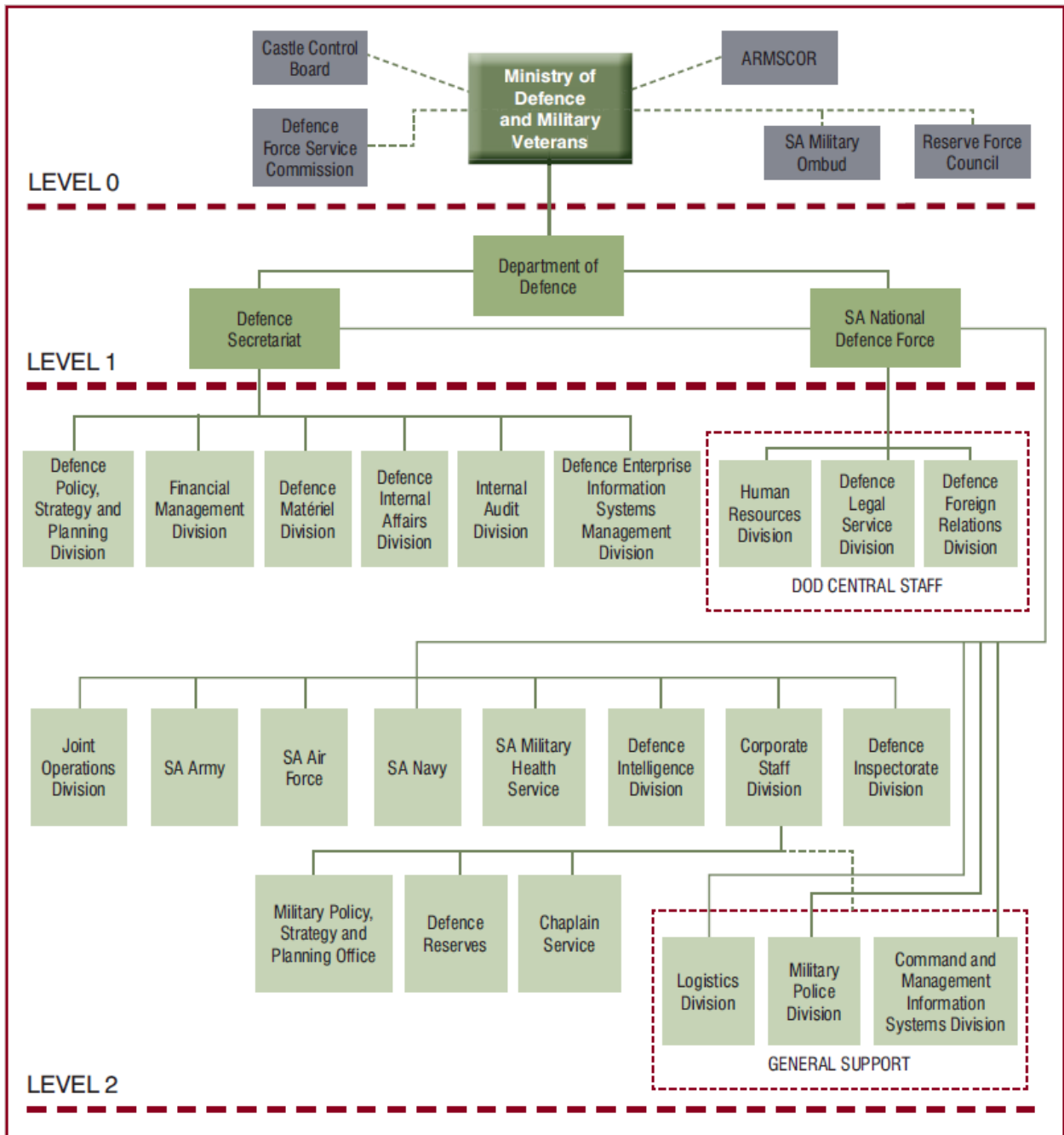
4. Tse Phethiswang ke Tshireletso. Tse phethiswang ke Tshireletso di lebane le sephetho sa Lefapha la Tshireletso, kapa dintho le ditshebeletso tse lebelletsweng. Sephetho se hlahoswa e le “tseo re di etsang le ho thus aka tsona”. Sephetho sa tshireletso ke tsena:

- a. Ho phethisa mabaka a tshireletso a tlamehang tlasa taelo le leano la mmuso.
- b. Hore tshireletso e dule e phethetse.
- c. Ho tshwara tshireletso ka bohlae.
- d. Hore tshireletso e bapane le moralo wa taolo.

5. Moralo o moholo wa mmopo wa Lefapha la Tshireletso:

- a. Letona la Tshireletso le Mekaubere ya Sesole ke kgotl’a phethiso ya Lefapha la Tshireletso.
- b. Lefapha la Tshireletso le kenyeleditse Ofisi ya Mongodi wa Tshireletso le Lebotho la Naha la Tshireletso Afrika Borwa. Mongodi wa Tshireletso ke Ofisiri ya Matlotlo le Hloho ya Lefapha, mme Mookamedi wa Lebotho la Tshireletso la Naha Afrika Borwa o ikarabela ho bolaedi le ketapele ya Lebotho la Tshireletso la Naha Afrika Borwa. Mongodi wa Tshireletso mmoho le Mookamedi wa Lebotho la Tshireletso la Naha Afrika Borwa ba latela metjha e mmedi e arohaneng e bontshitsweng ka moralo ona o latelang.

# MORALO O MOHOLO WA MMOPO WA BOTSAMAISI BA LEFAPHA LA TSHIRELETSO



Jwalekaha e hatitswe ho Department of Defence Planning Instruments mohla 2015 Tlhakubele 2015 leqhepheng la 27.

## TSEBISO YA BOITEANYO

### Kantoro ya Tshireletso

Lebitso: Secretary for Defence  
*Head of Department*  
*Accounting Officer*  
*Information Officer*

Aterese ya Poso: Private Bag X910, Pretoria, 0001  
 Nomoro ya Mohala: (012) 355 6220  
 Nomoro ya Fakse: (012) 355 5729  
 Aterese ya E-Mail: [secdef@dod.mil.za](mailto:secdef@dod.mil.za)  
 Tlhaloso ya Mesebetsi: Ho fana ka tataiso ho lefapha hore  
 Lefapha la Tshireletso le ntlafatse mokgwa o  
 loketseng o tshwereng tsamaiso ya tshireletso ka  
 makgethe e lebahantswe le molao le pholisi.

### **Lekala la Tshebediso ya Lesedi Tshwaro le Botsamaisi ba Tshireletso**

Lebitso: Department of Defence Deputy Information  
 Officer

Aterese ya Poso: Private Bag X910, Pretoria, 0001  
 Nomoro ya Mohala: (012) 672 1586  
 Nomoro ya Fakse: (012) 672 2111  
 Aterese ya E-Mail: [gito@dod.mil.za](mailto:gito@dod.mil.za)  
 Tlhaloso ya Mesebetsi: Ho fana ka tataiso le ho hlokomela tsamaiso  
 ya Matlafatso ya Thodiso ya Tlhahisoleseding  
 kahara Lefapha la Tshireletso ho latela Molao  
 wa Matlafatso ya Thodiso ya Tlhahisoleseding  
 (Molao 2 wa 2000).

### **Kantoro ya Matlafatso ya Thodiso ya Tlhahisoleseding**

Lebitso: Director Promotion of Access to Information

Aterese ya Poso: Private Bag X910, Pretoria, 0001  
 Nomoro ya Mohala: (012) 672 2972  
 Nomoro ya Fakse: (012) 672 2111  
 Aterese ya E-Mail: [paia@dod.mil.za](mailto:paia@dod.mil.za)  
 Tlhaloso a Mesebetsi: Ho namolla Ntlafatso ya Thodiso ya  
 Tlhahisoleseding kahara Lefapha la Tshireletso  
 ho latela Molao wa Matlafatso ya Thodiso ya  
 Tlhahisoleseding (Molao 2 wa 2000).

### **Pholisi, Leano la Tshireletso le Lekala la Moralo**

Lebitso: Chief of Defence Policy, Strategy and Planning  
 Aterese ya Poso: Private Bag X159, Pretoria, 0001  
 Nomoro ya Mohala: (012) 355 6224  
 Nomoro ya Fakse: (012) 355 5153  
 Tlhaloso ya Mesebetsi: Ho eletsa ho pholisi ya tshireletso le ho lebahanya tsamaiso ya leano la Lefapha ho latela pholisi ya naha ka pholisi ya tshireletso, leano le moralo ho thusa ka tsamaiso e ntle le e makgethe ya tshireletso le ho tshehetsa Komiti ya Naha ya Taolo ya Dibetsa tse Dumelletseng (National Conventional Arms Control – NCACC).

### **Lekala la Tsamaiso ya Ditjhelete**

Lebitso: Chief Financial Officer  
 Aterese ya Poso: Private Bag X 175, Pretoria, 0001  
 Nomoro ya Mohala: (012) 355 6217  
 Nomoro ya Fakse: (012) 355 5564  
 Tlhaloso ya Mesebetsi: Ho Thusa Mongodi wa Tshireletso ka baikarabelo ba tsamaiso ya ditjhelete bo kenyeleditseng ho hlopha tekanyetso le tlaleho ya ditjhelete. Ho ntlafatsa le ho tshwara taolo ya ditjhelete. Ho tswellisa pele ntlafatso ya ditjhelete ho latela keletso ya Mongodi wa Tshireletso.

### **Lekala la Disebediswa tsa Tshireletso**

Lebitso: Chief of Defence Material  
 Aterese ya Poso: Private Bag X910, Pretoria, 0001  
 Nomoro ya Mohala: (012) 355 5136  
 Nomoro ya Fakse: (012) 355 5154  
 Tlhaloso ya Mesebetsi: Ho lebahanya le ho tshwara Theko ya Disebediswa tsa Tshireletso le Bolebedi ka nepo ho latela tsela e nepahetseng ho fihlella pheko e lokileng le e bonahalang hara meedi ya melao e amehang.

### **Dikamano tsa Matjhaba tsa Tshireletso**

Lebitso: Chief of Defence International Affairs  
 Aterese ya poso: Private Bag X910, Pretoria, 0001  
 Nomoro ya Mohala: (012) 355 6207  
 Nomoro ya Fakse: (012) 355 5368  
 Tlhaloso ya Mesebetsi: Ho etsa le ho fana ka pholisi le keletso phihlellong le tsamaisong ya Dikamano tsa kaNtle le ntshetsopele ya setswalle sa Tshireletso ho netefatsa hore pholisi e amehang e dumellana le pholisi e fetohang e hlahang ya naha.



**Lekala la Bolekodi la Kahare**

Lebitso: Chief Audit Executive  
 Aterese ya Poso: Private Bag X910, Pretoria, 0001  
 Nomoro ya Mohala: (012) 355 6200  
 Nomoro ya Fakse: (012) 470 5846  
 Tlhaloso ya Mesebetsi: Ho fana ka tshebebetso tsa tekolo ho Lefapha la Tshireletso.

**Lekala la Tshebediso ya Lesedi, Tshwaro le Botsamaisi ba Tshireletso**

Lebitso: Government Information Technology Officer  
 Aterese ya Poso: Private Bag X910, Pretoria, 0001  
 Nomoro ya Mohala: (012) 672 1586  
 Nomoro ya Fakse: (012) 672 2111  
 Aterese ya E-Mail: [gito@dod.mil.za](mailto:gito@dod.mil.za)  
 Tlhaloso ya Mesebetsi: Ho fana ka tsela ho ditshebeletso le makala kaofela mabapi le Ditshebeletso le Tsamaiso ya Lesedi le Taetsano, Tahliso le Nepahalo ho Lefapha la Tshireletso.

**Lebotho la Tshireletso la Naha Afrika Borwa**

Lebitso: Chief of the South African National Defence Force  
 Aterese ya Poso: Private Bag X414, Pretoria, 0001  
 Nomoro ya Mohala: (012) 355 6060  
 Nomoro ya Fakse: (012) 355 6023  
 Tlhaloso ya Mesebetsi: Ho laela Lebotho la Tshireletso la Naha Afrika Borwa

**Lekala le Kopaneng la di-Opereishene**

Lebitso: Chief Joint Operations  
 Aterese ya Poso: Private Bag X1043, Thaba Tshwane, 1143  
 Nomoro ya Mohala: (012) 674 5500  
 Nomoro ya Fakse: (012) 674 5506  
 Tlhaloso ya Mesebetsi: Ho fana le ho sebedisa tsebo ya tshireletso, mmoho le tsebo ya opereishene ho phethela di-opereishene kaofela, hape le tshebedisano-mmoho pakeng tsa makal'a mafapha le ho nka seabo tlhakisong tsa sesole tsa matjhaba.

**Sesole sa Afrika Borwa**

Lebitso: Chief of the South African Army  
 Aterese ya Poso: Private Bag X981, Pretoria, 0001  
 Nomoro ya Mohala: (012) 355 1001  
 Nomoro ya Fakse: (012) 355 2055  
 Tlhaloso ya Mesebetsi: Ho fana ka tsebo le tshireletso ya fatshe e phethetsweng e tshehetsang poloko ya Afrika Borwa.



### **Sesole sa Moyeng Afrika Borwa**

Lebitso: Chief of the South African Air Force  
 Aterese ya Poso: Private Bag X199, Pretoria, 0001  
 Nomoro ya Mohala: (012) 312 2630  
 Nomoro ya Fakse: (012) 312 1422  
 Tlhaloso ya Mesebetsi: Ho fana ka tsebo le tshireletso ya moyeng e phethetsweng e tshehetsang tshireletso le poloko ya Afrika Borwa.

### **Sesole sa Metsing Afrika Borwa**

Lebitso: Chief of the South African Navy  
 Aterese ya Poso: Private Bag X102, Pretoria, 0001  
 Nomoro ya Mohala: (012) 339 4235  
 Nomoro ya Fakse: (012) 339 4463  
 Tlhaloso ya Mesebetsi: Ho fana ka ditshebeletso le tsebo ya kokelo e phethetsweng e tshehetsang tshireletso le poloko ya Afrika Borwa.

### **Tshebeletso ya Booki ya Sesole Afrika Borwa**

Lebitso: Surgeon General  
 Aterese ya Poso: Private Bag X102, Centurion, 0046  
 Nomoro ya Mohala: (012) 367 9001  
 Nomoro ya Fakse: (012) 367 9002  
 Tlhaloso ya Mesebetsi: Ho fana ka tshebeletso e nepahetseng ya booki e tshehetsang le ho matlafatsa mekgwa ya tshireletso le poloheho ya Afrika Borwa.

### **Lekala la Bohlwela ba Tshireletso**

Lebitso: Chief of Defence Intelligence  
 Aterese ya Poso: Private Bag X367, Pretoria, 0001  
 Nomoro ya Mohala: (012) 315 0453  
 Nomoro ya Fakse: (012) 315 0105  
 Tlhaloso ya Mesebetsi: Ho fana ka tsebo ya bohlela ba tshireletso le bohlela ba thibelo ka ho thea, ho rupella le ho tshwara tshebeletso e phethahetseng ya bohlela ba sesole, tshebeletso tsa tlatsetso le menyetla e meng e amehang.

### **Lekala la Ntlo-kgolo**

Lebitso: Chief of Corporate Staff  
 Aterese ya Poso: Private Bag X159, Pretoria, 0001  
 Nomoro ya Mohala: (012) 355 6040  
 Nomoro ya Fakse: (012) 355 6043  
 Tlhaloso ya Mesebetsi: Ho eletsa mabapi le pholisi ya ditaba tsa sesole le ho e lebahanya le tsela e loketseng ya sesole, Tsela ena e kenyelletsa le ho bopa pholisi, ho lekola tshebetso ya leano le tlaleho ya teng.

### **Lekala la Tshireletso la Tlhatlhobo**

Lebitso: Inspector General  
 Aterese ya Poso: Private Bag X671, Pretoria, 0001  
 Nomoro ya Mohala: (012) 312 4930  
 Nomoro ya Fakse: (012) 312 4708  
 Tlhaloso ya Mesebetsi: Ho etsa bonnete le bokgolwa ba tsamaiso ya Ditshebeletso le Makala a Lefapha la Tshireletso.

### **Lekala la Dirwallo**

Lebitso: Chief of Logistics  
 Aterese ya Poso: Private Bag X319, Pretoria, 0001  
 Nomoro ya Mohala: (012) 671 0293  
 Nomoro ya Fakse: (012) 671 0576  
 Tlhaloso ya Mesebetsi: Ho fana ka tshehetso e kopaneng ya tsamaiso ya dirwallo ho ditshebeletso, makala le bareki ba Lefapha la Tshireletso.

### **Lekala la Sepolesa sa Sesole**

Lebitso: Provost Marshall General  
 Aterese ya Poso: Private Bag X161, Pretoria, 0001  
 Nomoro ya Mohala: (012) 686 4000  
 Nomoro ya Fakse: (012) 686 4040  
 Tlhaloso ya Mesebetsi: Ho fana ka tsebo le tshebeletso tsa sepolesa sa sesole ho Lefapha la Tshireletso, ditshebeletso le makala kamoo Mookamedi wa Lebotho la Sesole a batlang kateng.

### **Lekala la Bolaedi le Bohlokamedi ba Tsamaiso ba Lesedi**

Lebitso: Chief of Command and Management Information Division  
 Aterese ya Poso: Private Bag X161, Pretoria, 0001  
 Nomoroya Mohala: (012) 355 5100  
 Nomoro ya Fakse: (012) 355 5113  
 Tlhaloso ya Mesebetsi: Ho fana ka Bolaedi le Bohlokamedi ba Tsamaiso ba Lesedi le tshebeletso e amehang, ho Lefapha la Tshireletso.

### **Tshebetso ya Pholisi ya Sesole le Moralo**

Lebitso: Chief of Military Policy, Strategy and Planning  
 Aterese ya Poso: Private Bag X159, Pretoria, 0001  
 Nomoro ya Mohala: (012) 355 5084  
 Nomoro ya Fakse: (012) 355 6043  
 Tlhaloso ya Mesebetsi: Ho eletsisa ka ditaba tsa pholisi ya sesole le ho lebahanya tsela e latelwang. Tsela ena e kenyelletsa ho bopeng pholisi, ho qala tsela le leano, ho shebana le phethahatso ya moralo le tlaleho ya teng.

## **Metlatsets'a Tshireletso**

Lebitso: Chief of Defence Reserves  
 Aterese ya Poso: Private Bag X161, Pretoria, 0001  
 Nomoro ya Mohala: (012) 355 6301  
 Nomoro ya Fakse: (012) 355 5882  
 Tlhaloso ya Mesebetsi: Ho tsamaisa kaho le tlhokomelo ya tshebetso ya Metlatsetsa, ho fana ka keletso ya botsebi ho ditaba tsa Metlatsetsa le ho matlafatsa/ho phatlalatsa tshebetso ya Metlatsetsa le boithaopo ba Metlatsetsa.

## **Tshebeletso ya Bodumedi**

Lebitso: Chaplain General  
 Aterese ya Poso: Private Bag X479, Pretoria, 0001  
 Nomoro ya Mohala: (012) 991 1684  
 Nomoro ya Fakse: (012) 991 1594  
 Tlhaloso ya Mesebetsi: Ho fana ka tshebeletso ya bodumedi e hlokometseng maloko a Lefapha la Tshireletso le malapa a bona le e matlafatsang kgolo ya semoya, tshehetso ya botho le bophelo bo hlwekileng.

## **Ofisi e Mahareng ya Lefapha la Tshireletso**

### **Lekala la Mehlopi ya Batho**

Lebitso: Chief Human Resource  
 Aterese ya Poso: Private Bag X159, Pretoria, 0001  
 Nomoro ya Mohala: (012) 355 6047  
 Aterese ya Fakse: (012) 355 6049  
 Tlhaloso ya Mesebetsi: Ho fana ka tshehetso e felletseng ya mehlopi ya batho ho Lefapha la Tshireletso.

### **Lekala la Ditshebeletso tsa Molao la Tshireletso**

Lebitso: Adjudant General  
 Aterese ya Poso: Private Bag X159, Pretoria, 0001  
 Nomoro ya Mohala: (012) 355 5362  
 Nomoro ya Fakse: (012) 355 6239  
 Tlhaloso ya Mesebetsi: Ho fana ka ditshebeletso tsa molao tsa profeshenale, tse dumeletsweng le tse sebetsang tse tshehetsang ka ho lekana dithloko tsa Lefapha la Tshireletso.

**Lekala la Dikamano tsa kaNtle la Tshireletso**

Lebitso: Chief of Defence Foreign Relations  
Aterese ya Poso: Private Bag X367, Pretoria, 0001  
Nomoro ya Mohala: (012) 312 4921  
Nomoro ya Fakse: (012) 312 4701  
Tlhaloso ya Mesebetsi: Ho fa Letona la Tshireletso, Lefapha la Tshireletso  
le Mekaubere ya Sesole kôpo le tshebeletso.

## TATAISO HO MOLAO WA MATLAFATSO YA THODISO YA TLHAHISOLESEDING

6. Serapa 10 sa Molao wa Matlafatso ya Thodiso ya Tlhahisoleseding e batla Khomishene ya Ditokelo tsa Batho ho kopanya le ho phatlalatsa tataiso e bonolo ho thusa batho ho thola direkoto le ditokomane, hape le hore batho ba sebedise tokelo ya ho thola lesedi.

7. Serapa se fa mokopi dinthla kaofela tseo mokopi a di hlokang ho thola rekoto efe kapa efe. Se tshwere lenane la tsebiso ya boiteanyo ba mafapha kaofela a mmuso le ditlamo tse tshwereng direkoto molemong wa mmuso, ekasitana le tsebiso ya boiteanyo ba dikhampani tse fapaneng tsa poraefete. Khomishene e lebelletswe hape ho ntjhafatsa tataiso ena bonyane hanngwe kamora dilemo tse pedi.

## O KA FUMANA TATAISO YA MOLAO WA MATLAFATSO YA THODISO YA TLHAHISOLESEDING KAE NA

8. Tataiso e fumaneha ka maleme a semmuso a Afrika Borwa kaofela: English, Afrikaans, isiNdebele, isiXhosa, isiZulu, Sepedi, Sesotho, Setswana, isisSwati, Tshivenda and Xitsonga.

9. Dikopi tsa tataiso di ka fumaneha diofising tsa diprovinsi tsa Khomishene ya Ditokelo tsa Batho. Ho feta moo, dikopi tsa elektroniki di fumaneha le websaeteng. Ya Khomishene ([www.sahrc.org.za](http://www.sahrc.org.za)) le websaeteng ya Open Democracy Advice Centre ([www.opendemocracy.org.za](http://www.opendemocracy.org.za)) le ho South African History Archives ([www.saha.org.za](http://www.saha.org.za)).

10. Tsebiso ya boiteanyo ba diofisi tsa diprovinsi tsa Khomishene ya Ditokelo tsa Batho ke:

- a. Ntlo-Kgolo  
Johannesburg  
Nomoro ya Mohala 011 877 3600  
Nomoro ya Fakse 011 403 0625
- b. Kapa-Koloni Botjhabela  
Port Elizabeth  
Nomoro ya Mohala 043 722 7828  
Fakse 043 722 7830
- c. Freistata  
Bloemfontein  
Nomoro ya Mohala 051 447 1130  
Nomoro ya Fakse 051 447 1128
- d. KwaZulu-Natal  
Durban  
Nomoro ya Mohala 031 304 7323  
Nomoro ya Fakse 031 304 7323
- e. Limpopo  
Polokwane  
Nomoro ya Mohala 015 291 3500  
051 291 3505

- f. Mpumalanga  
Nelspruit  
Nomoro ya Mohala 013 752 8292  
Nomoro ya Fakse 013 752 6890
- g. Kapa-Koloni Leboya  
Upington  
Nomoro ya Mohala 054 332 3993  
Nomoro ya Fakse 054 332 7750
- h. Leboya Bophirima  
Rustenburg  
014 592 0694  
014 594 1089
- i. Kapa-Koloni Bophirima  
Cape Town  
Nomoro ya mohala 021 426 2277  
Nomoro ya Fakse 021 426 2875

**O KENA JWANG HO LEFAPHA LA TSHIRELETSO HORE O THOLE TLHAHISOLESERING HO LALELA MOLAO WA MATLAFATSO YA THODISO YA TLHAHISOLESERING NA**

11. Tsela ya kopo. Mokopi o lokela ho latela tsela e latelang ho kopa Lefapha la Tshireletso tlhahisoleseding e amehang ho latela Molao wa Matlafatso ya Tlhahisoleseding (Molao Nomoro 2 wa 2000):

- a. Mokopi o tshwanetse ho sebedisa Foromo A e hatisitsweng ho Government Gazette (Govt. Notice R187 – 15 Tlhakola 2002) (sheba Sehlomathiso A ho fumana kopi ya Foromo A). Ho ya ka serapa 18 Foromo A e loketse e tlatswe ka botlalo, e ngolwe letsatsi, e saenwe e iswe ho Kgoro ya Matlafatso ya Thodiso ya Tlhahisoleseding.
  - i. Aterese ya Poso: Private Bag X910, Pretoria, 0001.
  - ii. Nomoro ya Mohala: (012) 672 1528.
  - iii. Nomoro ya Fakse: (012) 672 2111.
  - iv. Aterese ya E-Mail: [paia@dod.mil.za](mailto:paia@dod.mil.za)
- b. Ho ya ka serapa 18 (2) (a) (ii) kopi ya mokopi ya ID kapa passport e lokela ho hokelwa ho Foromo A.
- c. Ebang motho a etsa kopo lebitsong la e mong, o loketse ho ipolela le hore ke tlasa mabaka afe a etsang kopo eo, ho lokela hore a ba le tumello e ngotsweng e fanang ka tumello ho etsa kopo eo lebitsong la motho e mong mme hape kopi ya lengolo la eo yam o romileng ho etsa kopo e hokelwe Foromong A.
- d. Moo ebang a etsa kopo ya tlhahisoleseding le/kapa direkoto ka motho ya hlokaletseng, tse latelang di tlameha ho latelwa:
  - i. Ho ya ka serapa 34 (2) (e) mokopi o tlameha ho ntsha bopaki ba hore ke leloko la mofu kapa o loketse ho ntsha lengolo le mo dumellang ho tswa ho leloko la mofu le boelang hore o kopa tlhahisoleseding le/kapa direkoto.
  - ii. Ho ya ka serapa 18 (2) (i) setefikeiti sa lefu kapa kopi e netefaditsweng ya ID ya mofu e tlameha ho ntshuwa.
- e. Mokopi o tlameha ho fana ka dintlha ka botlalo tsa tsebahatso ya rekoto e koptjwang, hore rekoto e tle e tsonngwe. Ebang sebaka Formong se le senyane, mokopi o lokela ho tswela pele ho ngola leqhepheng le leng mme a ntano le hokella ho Foromo A. Mokopi o tlameha ho saena maqhephe a hoketsweng kaofela.
- f. Bopaki ba tefo ya kopo e leng R 35-00 ho latela serapa 22 (1) bo tlameha ho tsamaya mmoho le kopo ya ho thodiswa direkoto tsa Lefapha la Tshireletso. Tefo ya kopo e tshwanetse ho kenngwa akhaontong ya banka ya Lefapha la Tshireletso bankeng e tsejwang eo o ikgethelang



yona kapa e etsuwa ka tsela ya teransefere ya elektroniki ho kena akhaontong ya Lefapha la Tshireletso. Ebang motho a etsa kopo ya thodiso ya tlhahisoleseding mabapi le ditaba le/ kapa direkoto tsa hae, ha ho tefo e batlehang. Dintlha tsa akhaonto ya banka ya Lefapha la Tshireletso ke tsena:

Banka:	ABSA
Mofuta wa Akhaonto:	1Current/Cheque (Deposit)
Lekala:	Bosman Street, Pretoria
Khoutu ya Lekala:	632005
Mouni (Lebitso la monga akhaonto):	RSA Department of Defence
Nomoro ya akhaonto ya mouni:	10 4428 0074
Tshupo ya Dephosiiti :	30001212/Request fee
Khoutu ya Tefo:	30001212
Nomoro ya Mohala:	(012) 328 3143

- e. Ebang mokopi a sa tsebe ho ngola le ho bala, kappa a na le boqhwala, teng a ka etsa kopo ya molomo. Teng Lefapha la Tshireletso, Kgoro ya Matlafatso ya Thodiso ya Tlhahisoleseding, ba tlameha ho tlatsa fromo lebitsong la mokopi mme ba mo fe kopi.
- f. Mokopi o tlameha ho bolela hore na o kopa kopi ya rekoto kapa mokopi o batla ho lekola rekoto Senthareng ya Ditokomane ya Lefapha la Tshireletso na.
- g. Ebang, mmoho le karabo e ngotwseng ya kopo mokopi a lakatsa hore a bolellwe mabapi le qweto e nkuweng ho kopo eo ka mokgwa o mong hape, mohlala ka mohala, sena se tshwanetse se bolelwe.
- h. Ho lemohuwe hore nakong eo kopo e ananelwang hore tlhahisoleseding le thodiswe ho latela Molao wa Matlafatso ya Tlhahisoleseding ho tla ba teng ditefo malebana le dintho tse latelang:
  - i. Ho tsomana le ho hlopha rekoto hore e ntshuwe ho qosa R15.00 ka hora kapa karolo ya hora (ho sa kenyeletse hora ya mathomo).
  - ii. Ho lemohuwe hore Lefapha la Tshireletso la Dingolwa le k eke la qhaqha dfaele ho etsa dikopi ho latela serapa 29 (3):

***“Ebang mokopi a kopile thodiso ka sebopeho se itseng, thodiso eo e tshwanetse ho ntshuwa, ho ya ka serapa sa 28, ka sona sebopeho seo a se batlang, ntle le haeba ho etsa jwalo ho tla baka –***

***tshitiso e sa tsebisahaleng ho tshebetso e ntle ya setlamo seo se amehang;***

***tshenyo ya polokeho ya rekoto eo.”***

- iii. Tefo ya ho etsa dikopi tsa ditokomane tse amehang kaofela ka 60c kopi kangwe hodima leqhephe la boholo ba A4.

- iv. Tefo ya ho hatisa dikopi tse amehang ka 40c kopi kanngwe.
- v. Tefo ya tlhahisoleseding le amehang le tshwerweng khomputeng kapa sebopehong sa elektroniki kapa sebopehong se balehang khomputeng e le:
  - (1) Kahara diski ya stiffy ka R 5.00 diski kanngwe.
  - (2) Compact diski ka R 4.00 diski kanngwe.
- vi. Tefo ya phetolelo e amehang ya ditshwantsho ka R 22.00 hodima leqhephe la boholo ba A4 kapa karolo ya teng.
- vii. Tefo ya kopi e amehang ya ditshwantsho ka R 60.00.
- viii. Tefo ya phetolelo ya rekoto ya lentswe e amehang ho dingolwa ka R 12-00 leqhephe la boholo ba A4 kapa karolo ya teng.
- ix. Tefo ya kopi ya rekoto ya lentswe ka R 17.00.
- x. Tlhahisoleseding le/kapa direkoto tse kopilweng le tla ntshuwa ha feela tefo tse boletsweng di entswe mme le bopaki ba tefo bo hlahisitswe ho Kgoro ya Matlafatso ya Thodiso ya Tlhahisoleseding.

12. Metjha ya apile ya kahare. Lefapha la Tshireletso le na le metjha ya apile ho latela tlhaloso Dirapeng 74 le 75 tsa Molao. Sena se tla sebetsa nakong eo mokopi/motho e mong a batla etsa apile ka lebaka la qeto e nkuweng ke Ofisiri ya Tlhahisoleseding mabapi le:

- a. tefo e ntshuwang;
- b. boholo ba nako e ekeditsweng;
- c. mokgw'a thodiso; le
- d. ho qhalwa ha kopo ho thola rekoto.

13. Ebang mokopi/motho e mong a etsa apile ya kahare, foromo e baletsweng ya apile, Foromo B, e kopantsweng e le Sehlomathiso Foromo B, e tlameha ho tlatswa mme e romelwe ho Lefapha la Tshireletso, Kgoro ya Matlafatso ya Thodiso ya Tlhahisoleseding. (Nothisi ya Mmuso R187 – 15 Tlhakola 2002). Lefapha la Tshireletso, Kgoro ya Matlafatso ya Thodiso ya Tlhahisoleseding, e tla romela apile ena ya kahare le ditokomane tse mmoho ho Mongodi wa Tshireletso, Ofisiri ya Tlhahisoleseding, eo eena o tlo e fetisetsa ho Letona la Tshireletso le Mekaubere ya Sesole, Kgoro e Ikarabellang, hore ho nkuwe qeto.

14. Lefapha la Tshireletso, Kgoro ya Matlafatso ya Thodiso ya Tlhahisoleseding, le tla tsebisa mokopi/motho e mong mabapi le sephetho saapile eo ya kahare. Mokopi/motho e mong ya sa kgotsofatswang ke sephetho sa apile ya kahare o dumelletswe, pele ho matsatsi a 37, hore a kenye kopo ho lekgotla mabapi le qeto ya ho fella. Ebang kopo e jwalo e sa kenngwe pele ho nako eo, qeto ya Letona la Tshireletso le Mekaubere e tla sebetsa. Ebang ho kentswe kopo lekgotleng, ho loketse ho emelwe qeto ya lekgotla.

## HO THOLA DIREKOTO TSE TSHWERWENG KE LEFAPHA LA TSHIRELETSO

15. Mefuta ya direkoto tse fumanehang hanghang. Nothisi ho latela serapa 15 (2) sa Molao se hlalosa mefuta ya direkoto tsa ditlamo tsa setjhaba tse fumanehang ntle le hore motho a etse kopo ya thodiso ho latela Molao o amehang. Direkoto tsena di ka tholwa Diatjhaefeng tsa Lefapha la Tshireletso (bona tsebiso ya boiteanyo ba Lefapha la Tshireletso leqhepheng la 26).

TEKANTSHO YA MEFUTA YA DIREKOTO TSE FUMANEHANG HANGHANG HO LATELA KAROLO 15(1)(a) YA MOLAO WA MATLAFATSO YA THODISO YA TLHAHISOLESERING, 2000	MOKGWA WA HO THOLA DIREKOTO
<b>MOLEMONG WA HO DI BALA HO LATELA KAROLO 15(1)(a)(i):</b>	
<p><u>Diphatlalatso tsa DOD:</u></p> <ul style="list-style-type: none"> <li>i. The Defence Act, 1957 (Act No 44 of 1957) as amended.</li> <li>ii. White Paper on Defence (1996).</li> <li>iii. Defence Review (2014).</li> <li>iv. Department of Defence Instructions/Policies.</li> <li>v. Department of Defence Annual Reports.</li> <li>vi. Department of Defence Strategic Plan.</li> <li>vii. Department of Defence Information Bulletins.</li> </ul> <p><u>Diphatlalatso tsa Ntlokgolo tsa Taetsano:</u></p> <ul style="list-style-type: none"> <li>i. Ad Astra 1980 – 1996.</li> <li>ii. Kommando 1949 – 1970.</li> <li>iii. Militaria 1969 – 1996.</li> <li>iv. Scientia Militaria 1997 – 2000.</li> <li>v. Nongqai 1913 – 1959.</li> <li>vi. Nyala 1971 – 1994.</li> <li>vii. Paratus 1970 – 1994.</li> <li>viii. Salut 1994 – 2000.</li> <li>ix. SA Defence Force Review 1985 – 1991.</li> <li>x. SA Soldier 2001 – 2015.</li> </ul> <p><u>Direkoto tse amanang le Leboho la Tshireletso Afrika Borwa le Diopereishene tsa Leboho la tshireletso Afrika Borwa</u></p> <p><b>AGREE</b> DI/SDCI/DCIC/R/514/2/4 ya mohla 12 Mphalane 2011 DI/SDCI/DCIC/R/514/2/7 ya mohla Mmesa 2015</p> <p><b>ALET/SOUTHGO-TONGA</b> DI/DCI/DCIC/R/514/2/7 ya mohla 31 Pherekong 2011</p> <p><b>ALTAR</b> DI/SDCI/DCIC/R/514/2/4 ya mohla 26 Lwetse 2011</p> <p><b>ALWYN</b> DI/R/514/2/7 ya mohla 16 Motsheanong 2006</p> <p><b>ASKARI</b> DI/R/514/2/7 ya mohla 27 Mphalane 2005 DI/SDCI/DCIM/R/514/2/7 ya mohla 27 Phupjane 2008 DI/SDCO/DCIC/R/514/2/7 ya mohla Pherekong 2010 DI/SDCI/DCIC/R/514/2/7 ya mohla Pherekong 2012</p> <p><b>ASTRIX</b> DI/SDCI/DCIC/R/514/2/4 ya mohla 26 Lwetse 2011</p> <p><b>BARGAIN</b> DI/SDCI/DCIC/R/514/2/7 ya mohla 15 Phato 2012</p> <p><b>BARUTA</b> DI/SDCI/DCIC/R/514/2/7 ya mohla 30 Motsheanong 2014</p> <p><b>BEERPUT</b> DI/R/514/2/7 ya mohla 16 Motsheanong 2006</p> <p><b>BLOUWILDEBEEES</b> DI/R/202/3/7 ya mohla 21 Pdungwane 2001</p> <p><b>BOLSON</b> DI/R/514/2/7 ya mohla 16 Motsheanong 2006</p> <p><b>BOLSTER</b> DI/SDCI/DCIC/R/514/2/7 ya mohla Mmesa 2015</p>	<p>Direkoto tsena le ditshwantsho di ka shejwa Diatjhaefeng tsa Lefapha la Tshireletso.</p>

TEKANTSHO YA MEFUTA YA DIREKOTO TSE FUMANEHANG HANGHANG HO LATELA KAROLO 15(1)(a) YA MOLAO WA MATLAFATSO YA THODISO YA TLHAHISOLESERING, 2000	MOKGWA WA HO THOLA DIREKOTO
<b>MOLEMONG WA HO DI BALA HO LATELA KAROLO 15(1)(a)(i):</b>	
<p><b>BOMBAY</b> DI/SDCI/DCIC/R/514/2/7 ya mohla 15 Phato 2012</p> <p><b>BOOTLACE</b> DI/SDCI/DCIC/R/514/2/4 ya mohla 15 Mmesa 2011</p> <p><b>BORAX</b> DI/R/514/2/7 ya mohla 16 Motsheanong 2006 DI/SDCI/DCIC/R/514/2/7 ya mohla 15 Phato 2012</p> <p><b>BOWLER</b> DI/SDCI/DCIC/R/514/2/7 ya mohla 15 Phato 2012</p> <p><b>BRUILOF</b> DI/R/514/2/1/1 ya mola 11 Mphalane 2000</p> <p><b>BUDGIE</b> DI/R/514/2/7 ya mohla 16 Motsheanong 2006; DI/SDCI/DCIC/R/514/2/4 ya mohla 15 Mmesa 2011 DI/SDCI/DCIC/R/514/2/7 ya mohla 23 Mmesa 2012 DI/SDCI/DCIC/R/514/2/7 ya mohla 18 Phupjane 2012 DI/SDCI/DCIC/R/514/2/7 ya mohla 15 Phato 2012</p> <p><b>CANNABIS</b> DI/SDCI/DCIC/R/514/2/4 ya mohla 15 Mmesa 2011</p> <p><b>CARROT</b> DI/SDCI/DCIC/R/514/2/4 ya mohla 15 Mmesa 2011</p> <p><b>CASTILLO</b> DI/R/514/2/7 ya mohla 16 Motsheanong 2006</p> <p><b>CINEMA</b> DI/R/514/2/7 ya mohla 16 Motsheanong 2006 DI/SDCI/DCIC/R/514/2/4 ya mohla 26 Lwetse 2011 DI/SDCI/DCIC/R/514/2/7 ya mohla 31 Pherekongong 2012</p> <p><b>COLOSSEUM</b> DI/DCI/DCIC/R/514/2/7 ya mohla 31 Pherekongong 2011</p> <p><b>COLOSSUS</b> DI/SDCI/DCIC/R/514/2/4 ya mohla 15 Mmesa 2011</p> <p><b>COMBAT</b> DI/SDCI/DCIC/R/514/2/7 ya mohla 15 Phato 2012</p> <p><b>COTTON</b> DI/SDCI/DCIC/R/514/2/4 ya mohla 15 Mmesa 2011</p> <p><b>CUCUMBER</b> DI/SDCI/DCIC/R/514/2/4 ya mohla 26 Lwetse 2011</p> <p><b>CUPID</b> DI/R/514/2/7 ya mohla 16 Motsheanong 2006 DI/SDCI/DCIC/R/514/2/7 ya mohla 15 Phato 2012</p> <p><b>DAISY</b> DI/SDCO/DCIC/R/514/2/7 ya mohla Pherekongong 2010</p> <p><b>DINGO</b> DI/SDCI/DCIC/R/514/2/7 ya mohla 23 Mmesa 2012</p> <p><b>DISA/KASALA</b> DI/SDCI/DCIC/R/514/2/4 ya mohla 26 Lwetse 2011</p> <p><b>DOEMPA</b> DI/SDCI/DCIC/R/514/2/4 ya mohla 26 Lwetse 2011</p> <p><b>DOLFYN</b> DI/R/514/2/7 ya mohla 16 Motsheanong 2006</p> <p><b>DRAMA</b> DI/SDCI/DCIC/R/514/2/4 ya mohla 26 Lwetse 2011</p> <p><b>DUIKER</b> DI/R/202/3/7 ya mohla 21 Pudungwane 2001</p> <p><b>ENDURE</b> DI/SDCO/DCIC/R/514/2/7 ya mohla Pherekongong 2010</p>	

TEKANTSHO YA MEFUTA YA DIREKOTO TSE FUMANEHANG HANGHANG HO LATELA KAROLO 15(1)(a) YA MOLAO WA MATLAFATSO YA THODISO YA TLHAHISOLESERING, 2000	MOKGWA WA HO THOLA DIREKOTO
<b>MOLEMONG WA HO DI BALA HO LATELA KAROLO 15(1)(a)(i):</b>	
<p><b>EXCITE</b> DI/R/514/2/7 ya mohla 16 Motsheanong 2006 DI/SDCO/DCIC/R/514/2/7 ya mohla Pherekong 2010</p> <p><b>FIREWOOD</b> DI/DCI/DCIM/R/202/3/7 ya mohla 18 Tlhakola 2008 DI/SDCI/DCIC/R/514/2/7 ya mohla 31 Pherekong 2012</p> <p><b>FISANT</b> DI/DCI/DCIC/R/514/2/7 ya mohla 31 Pherekong 2011</p> <p><b>FLAMINGO</b> DI/R/514/2/7 ya mohla 27 Mphalane 2005</p> <p><b>FLEMISH</b> DI/DCI/DCIC/R/514/2/7 ya mohla 31 Pherekong 2011</p> <p><b>FOCUS</b> DI/SDCI/DCIC/R/514/2/7 ya mohla 31 Pherekong 2012 DI/SDCI/DCIC/R/514/2/7 ya mohla 13 Motsheanong 2013</p> <p><b>GLAZIER</b> DI/SDCI/DCIC/R/514/2/7 ya mohla Mmesa 2015</p> <p><b>GOMMA</b> DI/R/514/2/7 ya mohla 16 Motsheanong 2006</p> <p><b>HANSAK</b> DI/R/514/2/7 ya mohla 16 Motsheanong 2006</p> <p><b>HILTI</b> DI/SDCO/DCIC/R/514/2/7 ya mohla Pherekong 2010</p> <p><b>HOENDER</b> DI/DCI/DCIC/R/514/2/7 ya mohla 31 Pherekong 2011</p> <p><b>HURRICANE</b> DI/SDCI/DCIO/R/202/3/7 ya mohla 28 Phupu 2008</p> <p><b>JAVELIN</b> DI/R/514/2/7 ya mohla 16 Motsheanong 2006</p> <p><b>JERRY</b> DI/R/514/2/7 ya mohla 16 Motsheanong 2006</p> <p><b>JULIET</b> DI/SDCI/DCIC/R/514/2/4 ya mohla 31 Pherekong 2011</p> <p><b>KAKEBEEN</b> DI/R/514/2/7 ya mohla 16 Motsheanong 2006</p> <p><b>KANEEL</b> DI/R/514/2/7 ya mohla 16 Motsheanong 2006</p> <p><b>KATZEN</b> DI/SDCI/DCIC/R/514/2/4 ya mohla 12 Mphalane 2011</p> <p><b>KONTAK</b> DI/DCI/DCIC/R/514/2/7 ya mohla 31 Pherekong 2011</p> <p><b>KROPDUIF</b> DI/R/514/2/7 ya mohla 16 Motsheanong 2006</p> <p><b>LARK</b> DI/DCI/DCIC/R/514/2/7 ya mohla 31 Pherekong 2011 DI/SDCI/DCIC/R/514/2/4 ya mohla 26 Lwetse 2011</p> <p><b>LILAC</b> DI/R/514/2/7 ya mohla 16 Motsheanong 2006 DI/SDCI/DCIC/R/514/2/7 ya mohla 31 Pherekong 2012</p> <p><b>LINGER</b> DI/SDCO/DCIC/R/514/2/7 ya mohla Pherekong 2010</p> <p><b>MAGNETO</b> DI/R/514/2/7 ya mohla 16 Motsheanong 2006</p> <p><b>MAGNETO (EGRET II)</b> DI/SDCI/DCIC/R/514/2/4 ya mohla 26 Lwetse 2011</p>	

TEKANTSHO YA MEFUTA YA DIREKOTO TSE FUMANEHANG HANGHANG HO LATELA KAROLO 15(1)(a) YA MOLAO WA MATLAFATSO YA THODISO YA TLHAHISOLESERING, 2000	MOKGWA WA HO THOLA DIREKOTO
<b>MOLEMONG WA HO DI BALA HO LATELA KAROLO 15(1)(a)(i):</b>	
<p><b>MAKRO</b> DI/R/514/2/7 ya mohla 16 Motsheanong 2006</p> <p><b>MARKOTTER</b> DI/SDCI/DCIC/R/514/2/4 ya mohla 26 Lwetse 2011</p> <p><b>MEEBOS</b> DI/R/514/2/7 ya mohla 16 Motsheanong 2006</p> <p><b>MERLYN</b> DI/R/514/2/7 ya mohla 25 Phato 2003 DI/SDCO/DCIC/R/514/2/7 ya mohla Pherekong 2010 DI/SDCI/DCIC/R/514/2/7 ya mohla 15 Phato 2012</p> <p><b>MILA - PIKI</b> DI/SDCI/DCIC/R/514/2/4 ya mohla 26 Lwetse 2011</p> <p><b>MODULAR</b> DI/SDCO/DCIC/R/514/2/7 ya mohla Pherekong 2010</p> <p><b>MOTIVE</b> DI/SDCO/DCIC/R/514/2/7 ya mohla Pherekong 2010</p> <p><b>NIGEL</b> DI/SDCI/DCIC/R/514/2/7 ya mohla 31 Pherekong 2012</p> <p><b>OORTREK</b> DI/R/514/2/7 ya mohla 16 Motsheanong 2006</p> <p><b>OPEET</b> DI/R/514/2/7 ya mohla 16 Motsheanong 2006</p> <p><b>OPSAAL</b> DI/R/514/2/7 ya mohla 16 Motsheanong 2006</p> <p><b>OTTER</b> DI/R/202/3/7 ya mohla 21 Pudungwane 2001</p> <p><b>OUTLINE</b> DI/DCI/DCIC/R/514/2/7 ya mohla 31 Pherekong 2011</p> <p><b>PACT</b> DI/SDCO/DCIC/R/514/2/7 ya mohla Pherekong 2010</p> <p><b>PAROOL</b> DI/SDCI/DCIC/R/514/2/4 ya mohla 26 Lwetse 2011 DI/SDCI/DCIC/R/514/2/7 ya mohla 15 Phato 2012</p> <p><b>PEBBLE</b> DI/SDCI/DCIC/R/514/2/7 ya mohla Mmesa 2015</p> <p><b>PRONE</b> DI/SDCO/DCIC/R/514/2/7 ya mohla Pherekong 2010</p> <p><b>PROTEA</b> DI/SDCO/DCIC/R/514/2/7 ya mohla Pherekong 2010 DI/DCI/DCIC/R/514/2/7 ya mohla 31 Pherekong 2011</p> <p><b>REINDEER</b> DI/R/202/3/7 ya mohla 11 Tlhakubele 2002; DI/SDCO/DCIC/R/514/2/7 ya mohla Pherekong 2010</p> <p><b>REKSTOK</b> DI/SDCI/DCIM/R/514/2/7 ya mohla 28 Phupu 2008 DI/SDCO/DCIC/R/514/2/7 ya mohla Pherekong 2010 DI/SDCI/DCIC/R/514/2/4 ya mohla 15 Mmesa 2011 DI/SDCI/DCIC/R/514/2/7 ya mohla 31 Pherekong 2012</p> <p><b>RIEMPIES</b> DI/R/514/2/7 ya mohla 16 Motsheanong 2006</p> <p><b>RUGGRAAT</b> DI/SDCI/DCIC/R/514/2/4 ya mohla 26 Lwetse 2011 DI/SDCI/DCIC/R/514/2/7 ya mohla 31 Pherekong 2012</p> <p><b>SAFRAAN</b> DI/SDCI/DCIC/R/514/2/4 ya mohla 15 Mmesa 2011</p>	

TEKANTSHO YA MEFUTA YA DIREKOTO TSE FUMANEHANG HANGHANG HO LATELA KAROLO 15(1)(a) YA MOLAO WA MATLAFATSO YA THODISO YA TLHAHISOLESEDING, 2000	MOKGWA WA HO THOLA DIREKOTO
<b>MOLEMONG WA HO DI BALA HO LATELA KAROLO 15(1)(a)(i):</b>	
<p><b>SAVANNAH</b> DI/SDCI/DCIM/R/514/2/7 ya mohla 27 Phupjane 2008 DI/SDCI/DCIC/514/2/7 ya mohla 03 Phupjane 2011 DI/SDCI/DCIC/R/514/2/7 ya mohla 03 Mphalane 2011</p> <p><b>SCAPULA</b> DI/SDCI/DCIC/R/514/2/4 ya mohla 15 Mmesa 2011</p> <p><b>SCEPTIC</b> DI/SDCI/DCIM/R/514/2/7 ya mohla 27 Phupjane 2008 DI/SDCO/DCIC/R/514/2/7 ya mohla Pherekong 2010 DI/SDCI/DCIC/R/514/2/7 ya mohla 31 Pherekong 2012 DI/SDCI/DCIC/R/514/2/7 ya mohla 23 Mmesa 2012</p> <p><b>SCLERA</b> DI/SDCI/DCIC/R/514/2/4 ya mohla 26 Lwetse 2011</p> <p><b>SECUNDUS</b> DI/SDCI/DCIC/R/514/2/4 ya mohla 26 Lwetse 2011</p> <p><b>SEDUKU</b> DI/SDCI/DCIC/R/514/2/4 ya mohla 26 Lwetse 2011</p> <p><b>SEILJAG</b> DI/R/514/2/7 ya mohla 16 Motsheanong 2006 DI/DCI/DCIC/R/514/2/7 ya mohla 31 Pherekong 2011 DI/SDCI/DCIC/R/514/2/7 ya mohla 15 Phato 2012</p> <p><b>SEVTA</b> DI/R/514/2/7 ya mohla 27 Mphalane 2005</p> <p><b>SHOVEL</b> DI/SDCI/DCIC/R/514/2/7 ya mohla 15 Phato 2012</p> <p><b>SHUTTER</b> DI/SDCI/DCIC/R/514/2/7 ya mohla 10 Mmesa 2013</p> <p><b>SNOEK</b> DI/R/514/2/7 ya mohla 16 Motsheanong 2006</p> <p><b>SPEEDO</b> DI/R/514/2/7 ya mohla 16 Motsheanong 2006</p> <p><b>STOMATI</b> DI/SDCI/DCIC/R/514/2/4 ya mohla 26 Lwetse 2011</p> <p><b>SUPER</b> DI/R/514/2/7 ya mohla 07 Pudungwane 2005</p> <p><b>SWIVEL</b> DI/R/202/3/7 mohla 21 Pudungwane 2001</p> <p><b>TOMBSTONE</b> DI/SDCI/DCIC/R/514/2/7 ya mohla 23 Mmesa 2012 DI/SDCI/DCIC/R/514/2/7 ya mohla 18 Phupjane 2012</p> <p><b>TRAMPOLIEN</b> DEF INT/C/202/3 ya mohla 05 Motsheanong 1999</p> <p><b>VIRIATO</b> DI/SDCI/DCIC/R/514/2/4 ya mohla 26 Lwetse 2011</p> <p><b>VLAKVARK</b> DI/R/514/2/7 ya mohla 16 Motsheanong 2006</p> <p><b>WALLPAPER</b> DI/R/514/2/7 ya mohla 16 Motsheanong 2006</p> <p><b>WENDY</b> DI/R/514/2/7 ya mohla 16 Motsheanong 2006</p> <p><b>YAHOO</b> DI/SDCI/DCIC/R/514/2/4 ya mohla 15 Mmesa 2011 DI/SDCI/DCIC/R/514/2/7 ya mohla 15 Phato 2012</p> <p><b>ZAIRE</b> DI/SDCI/DCIC/R/514/2/7 ya mohla Mmesa 2015</p>	



TEKANTSHO YA MEFUTA YA DIREKOTO TSE FUMANEHANG HANGHANG HO LATELA KAROLO 15(1)(a) YA MOLAO WA MATLAFATSO YA THODISO YA TLHAHISOLESERING, 2000	MOKGWA WA HO THOLA DIREKOTO
MOLEMONG WA HO DI BALA HO LATELA KAROLO 15(1)(a)(i):	
<p><b>ZAIRE-GALLERY</b> DI/SDCI/DCIC/R/514/2/7 ya mohla Mmesa 2015</p> <p><b>ZAIRE-GALLERY-IVORY</b> DI/SDCI/DCIC/R/514/2/7 ya mohla Mmesa 2015</p> <p><b>ZAIRE-PUTHON</b> DI/SDCI/DCIC/R/514/2/7 ya mohla Mmesa 2015</p> <p><b>ZAIRE-TADPOLE</b> DI/SDCI/DCIC/R/514/2/7 ya mohla Mmesa 2015</p> <p><b>ZEPELIN</b> DI/R/514/2/7 ya mohla 16 Motsheanong 2006</p> <p><u>Direkoto kahara Diatjhaefe tsa Lefapha la Tshireletso tse amanang le Diopereishene tse entsweng le ho kenyeletsa 31 Tshitwe 1969</u></p> <p>Korean War 1950 - 1953 1<sup>st</sup> World War 1914 - 1915 2<sup>nd</sup> World War 1939 - 1945 Ho thehwa ha Leboho la Tshireletso la Kopano mohla 1912</p> <p>Dingollano tse tshwailweng <b>Restricted</b> tse hlodilweng ho fihla le ho kenyeletsa 31 Tshitwe 1975 tse Diatjhaefeng tsa DOD.</p>	
TEKANTSHO YA MEFUTA YA DIREKOTO TSE FUMANEHANG HANGHANG HO LATELA KAROLO 15(1)(a) YA MOLAO WA MATLAFATSO YA THODISO YA TLHAHISOLESERING, 2000	MOKGWA WA HO THOLA DIREKOTO
MOLEMONG WA HO DI REKA HO LATELA KAROLO 15(1)(a)(ii):	
Ha ho teng.	
TEKANTSHO YA MEFUTA YA DIREKOTO TSE FUMANEHANG HANGHANG HO LATELA KAROLO 15(1)(a) YA MOLAO WA MATLAFATSO YA THODISO YA TLHAHISOLESERING, 2000	MOKGWA WA HO THOLA DIREKOTO
MOLEMONG WA HO ETSA DIKOPI HO LATELA KAROLO 15(1)(a)(ii)	
<p><u>Diphatlalatso tsa DOD:</u></p> <ol style="list-style-type: none"> <li>The Defence Act, 1957 (Act No 44 of 1957) as amended.</li> <li>White Paper on Defence (1996).</li> <li>Defence Review (2014).</li> <li>Department of Defence Instructions/Policies.</li> <li>Department of Defence Annual Reports.</li> <li>Department of Defence Strategic Plan.</li> <li>Department of Defence Information Bulletins.</li> </ol> <p><u>Diphatlalatso tsa Taetsano tsa Ntlo-Kgolo:</u></p> <ol style="list-style-type: none"> <li>Ad Astra 1980 – 1996.</li> <li>Kommando 1949 – 1970.</li> <li>Militaria 1969 – 1996.</li> <li>Scientia Militaria 1997 – 2000.</li> <li>Nongqai 1913 – 1959.</li> <li>Nyala 1971 – 1994.</li> <li>Paratus 1970 – 1994.</li> <li>Salut 1994 – 2000.</li> <li>SA Defence Force Review 1985 – 1991.</li> <li>SA Soldier 2001 – 2015.</li> </ol> <p><u>Direkoto tse amanang le Leboho la Tshireletso Afrika Borwa le Diopereishene tsa Leboho la tshireletso Afrika Borwa</u></p> <p><b>AGREE</b> DI/SDCI/DCIC/R/514/2/4 ya mohla 12 Mphalane 2011 DI/SDCI/DCIC/R/514/2/7 ya mohla Mmesa 2015</p>	<p>Ho tla etswa dikopi le ho ngatafatsa direkoto kaofela ho latela tefo tse boletsweng serapeng 11 sa manyuwale ona.</p> <p>Molemong wa ho boloka ditokomane tse pampiring e bonolo, baballisi ba dumeletsweng ho sebedisa khamera tsa dijithale kapa sekheha sa letsoho ho tshwantsa ditokomane. Mmatlisisi ha a lefe tjelete. <b>(Bahuruwa ba Diatjhaefe tsa Lefapha la Tshireletso ba tla supa hore ke ditokomane dife na tse senyehang habonolo).</b></p> <p>Dikopi tsa ditshwantsho kahara pokello ya Diatjhaefe tsa Lefapha la Tshireletso di fumantswa baballisi ka R5.00 setshwantso ka seng.</p>

TEKANTSHO YA MEFUTA YA DIREKOTO TSE FUMANEHANG HANGHANG HO LATELA KAROLO 15(1)(a) YA MOLAO WA MATLAFATSO YA THODISO YA TLHAHISOLESERING, 2000	MOKGWA WA HO THOLA DIREKOTO
<b>MOLEMONG WA HO ETSA DIKOPI HO LATELA KAROLO 15(1)(a)(ii)</b>	
<p><b>ALET/SOUTHGO-TONGA</b> DI/DCI/DCIC/R/514/2/7 ya mohla 31 Pherekong 2011</p> <p><b>ALTAR</b> DI/SDCI/DCIC/R/514/2/4 ya mohla 26 Lwetse 2011</p> <p><b>ALWYN</b> DI/R/514/2/7 ya mohla 16 Motsheanong 2006</p> <p><b>ASKARI</b> DI/R/514/2/7 ya mohla 27 Mphalane 2005 DI/SDCI/DCIM/R/514/2/7 ya mohla 27 Phupjane 2008 DI/SDCO/DCIC/R/514/2/7 ya mohla Pherekong 2010 DI/SDCI/DCIC/R/514/2/7 ya mohla Pherekong 2012</p> <p><b>ASTRIX</b> DI/SDCI/DCIC/R/514/2/4 ya mohla 26 Lwetse 2011</p> <p><b>BARGAIN</b> DI/SDCI/DCIC/R/514/2/7 ya mohla 15 Phato 2012</p> <p><b>BARUTA</b> DI/SDCI/DCIC/R/514/2/7 ya mohla 30 Motsheanong 2014</p> <p><b>BEERPUT</b> DI/R/514/2/7 ya mohla 16 Motsheanong 2006</p> <p><b>BLOUWILDEBEEES</b> DI/R/202/3/7 ya mohla 21 Pudungwane 2001</p> <p><b>BOLSON</b> DI/R/514/2/7 ya mohla 16 Motsheanong 2006</p> <p><b>BOLSTER</b> DI/SDCI/DCIC/R/514/2/7 ya mohla Mmesa 2015</p> <p><b>BOMBAY</b> DI/SDCI/DCIC/R/514/2/7 ya mohla 15 Phato 2012</p> <p><b>BOOTLACE</b> DI/SDCI/DCIC/R/514/2/4 ya mohla 15 Mmesa 2011</p> <p><b>BORAX</b> DI/R/514/2/7 ya mohla 16 Motsheanong 2006 DI/SDCI/DCIC/R/514/2/7 ya mohla 15 Phato 2012</p> <p><b>BOWLER</b> DI/SDCI/DCIC/R/514/2/7 ya mohla 15 Phato 2012</p> <p><b>BRUILOF</b> DI/R/514/2/1/1 ya mohla 11 Mphalane 2000</p> <p><b>BUDGIE</b> DI/R/514/2/7 ya mohla 16 Motsheanong 2006 DI/SDCI/DCIC/R/514/2/4 ya mohla 15 Mmesa 2011 DI/SDCI/DCIC/R/514/2/7 ya mohla 23 Mmesa 2012 DI/SDCI/DCIC/R/514/2/7 ya mohla 18 Phupjane 2012 DI/SDCI/DCIC/R/514/2/7 ya mohla 15 Phato 2012</p> <p><b>CANNABIS</b> DI/SDCI/DCIC/R/514/2/4 ya mohla 15 Mmesa 2011</p> <p><b>CARROT</b> DI/SDCI/DCIC/R/514/2/4 ya mohla 15 Mmesa 2011</p> <p><b>CASTILLO</b> DI/R/514/2/7 ya mohla 16 Motsheanong 2006 DI/SDCI/DCIC/R/514/2/7 ya mohla 31 Pherekong 2012</p> <p><b>CINEMA</b> DI/R/514/2/7 ya mohla 16 Motsheanong 2006 DI/SDCI/DCIC/R/514/2/4 ya mohla 26 Lwetse 2011</p> <p><b>COLOSSEUM</b> DI/DCI/DCIC/R/514/2/7 ya mohla 31 Pherekong 2011</p> <p><b>COLOSSUS</b> DI/SDCI/DCIC/R/514/2/4 ya mohla 15 Mmesa 2011</p>	

TEKANTSHO YA MEFUTA YA DIREKOTO TSE FUMANEHANG HANGHANG HO LALELA KAROLO 15(1)(a) YA MOLAO WA MATLAFATSO YA THODISO YA TLHAHISOLESERING, 2000	MOKGWA WA HO THOLA DIREKOTO
<b>MOLEMONG WA HO ETSA DIKOPI HO LALELA KAROLO 15(1)(a)(ii)</b>	
<p><b>COMBAT</b> DI/SDCI/DCIC/R/514/2/7 ya mohla 15 Phato 2012</p> <p><b>COTTON</b> DI/SDCI/DCIC/R/514/2/4 ya mohla 15 Mmesa 2011</p> <p><b>CUCUMBER</b> DI/SDCI/DCIC/R/514/2/4 ya mohla 26 Lwetse 2011</p> <p><b>CUPID</b> DI/R/514/2/7 ya mohla 16 Motsheanong 2006 DI/SDCI/DCIC/R/514/2/7 ya mohla 15 Phato 2012</p> <p><b>DAISY</b> DI/SDCO/DCIC/R/514/2/7 ya mohla Pherekong 2010</p> <p><b>DINGO</b> DI/SDCI/DCIC/R/514/2/7 ya mohla 23 Mmesa 2012</p> <p><b>DISA/KASALA</b> DI/SDCI/DCIC/R/514/2/4 ya mohla 26 Lwetse 2011</p> <p><b>DOEMPA</b> DI/SDCI/DCIC/R/514/2/4 ya mohla 26 Lwetse 2011</p> <p><b>DOLFYN</b> DI/R/514/2/7 ya mohla 16 Motsheanong 2006</p> <p><b>DRAMA</b> DI/SDCI/DCIC/R/514/2/4 ya mohla 26 Lwetse 2011</p> <p><b>DUIKER</b> DI/R/202/3/7 ya mohla 21 Pudungwane 2001</p> <p><b>ENDURE</b> DI/SDCO/DCIC/R/514/2/7 ya mohla Pherekong 2010</p> <p><b>EXCITE</b> DI/R/514/2/7 ya mohla 16 Motsheanong 2006 DI/SDCO/DCIC/R/514/2/7 ya mohla Pherekong 2010</p> <p><b>FIREWOOD</b> DI/DCI/DCIM/R/202/3/7 ya mohla 18 Tihakola 2008 DI/SDCI/DCIC/R/514/2/7 ya mohla 31 Pherekong 2012</p> <p><b>FISANT</b> DI/DCI/DCIC/R/514/2/7 ya mohla 31 Pherekong 2011</p> <p><b>FLAMINGO</b> DI/R/514/2/7 ya mohla 27 Mphalane 2005</p> <p><b>FLEMISH</b> DI/DCI/DCIC/R/514/2/7 ya mohla 31 Pherekong 2011</p> <p><b>FOCUS</b> DI/SDCI/DCIC/R/514/2/7 ya mohla 31 Pherekong 2012 DI/SDCI/DCIC/R/514/2/7 ya mohla 13 Motsheanong 2013</p> <p><b>GLAZIER</b> DI/SDCI/DCIC/R/514/2/7 ya mohla Mmesa 2015</p> <p><b>GOMMA</b> DI/R/514/2/7 ya mohla 16 Motsheanong 2006</p> <p><b>HANSAK</b> DI/R/514/2/7 ya mohla 16 Motsheanong 2006</p> <p><b>HILTI</b> DI/SDCO/DCIC/R/514/2/7 ya mohla Pherekong 2010</p> <p><b>HOENDER</b> DI/DCI/DCIC/R/514/2/7 ya mohla 31 Pherekong 2011</p> <p><b>HURRICANE</b> DI/SDCI/DCIO/R/202/3/7 ya mohla 28 Phupu 2008</p> <p><b>JAVELIN</b> DI/R/514/2/7 dated 16 May 2006</p>	

TEKANTSHO YA MEFUTA YA DIREKOTO TSE FUMANEHANG HANGHANG HO LALELA KAROLO 15(1)(a) YA MOLAO WA MATLAFATSO YA THODISO YA TLHAHISOLESERING, 2000	MOKGWA WA HO THOLA DIREKOTO
<b>MOLEMONG WA HO ETSA DIKOPI HO LALELA KAROLO 15(1)(a)(ii)</b>	
<p><b>JERRY</b> DI/R/514/2/7 ya mohla 16 Motsheanong 2006</p> <p><b>JULIET</b> DI/SDCI/DCIC/R/514/2/4 ya mohla 31 Pherekong 2011</p> <p><b>KAKEBEEN</b> DI/R/514/2/7 ya mohla 16 Motsheanong 2006</p> <p><b>KANEEL</b> DI/R/514/2/7 ya mohla 16 Motsheanong 2006</p> <p><b>KATZEN</b> DI/SDCI/DCIC/R/514/2/4 ya mohla 12 Mphalane 2011</p> <p><b>KONTAK</b> DI/DCI/DCIC/R/514/2/7 ya mohla 31 Pherekong 2011</p> <p><b>KROPDUIF</b> DI/R/514/2/7 ya mohla 16 Motsheanong 2006</p> <p><b>LARK</b> DI/DCI/DCIC/R/514/2/7 ya mohla 31 Pherekong 2011 DI/SDCI/DCIC/R/514/2/4 ya mohla 26 Lwetse 2011</p> <p><b>LILAC</b> DI/R/514/2/7 ya mohla 16 Motsheanong 2006 DI/SDCI/DCIC/R/514/2/7 ya mohla 31 Pherekong 2012</p> <p><b>LINGER</b> DI/SDCO/DCIC/R/514/2/7 ya mohla Pherekong 2010</p> <p><b>MAGNETO</b> DI/R/514/2/7 ya mohla 16 Motsheanong 2006</p> <p><b>MAGNETO (EGRET II)</b> DI/SDCI/DCIC/R/514/2/4 ya mohla 26 Lwetse 2011</p> <p><b>MAKRO</b> DI/R/514/2/7 ya mohla 16 Motsheanong 2006</p> <p><b>MARKOTTER</b> DI/SDCI/DCIC/R/514/2/4 ya mohla 26 Lwetse 2011</p> <p><b>MEEBOS</b> DI/R/514/2/7 ya mohla 16 Motsheanong 2006</p> <p><b>MERLYN</b> DI/R/514/2/7 ya mohla 25 Phato 2003 DI/SDCO/DCIC/R/514/2/7 ya mohla Pherekong 2010 DI/SDCI/DCIC/R/514/2/7 ya mohla 15 Phato 2012</p> <p><b>MILA - PIKI</b> DI/SDCI/DCIC/R/514/2/4 ya mohla 26 Lwetse 2011</p> <p><b>MODULAR</b> DI/SDCO/DCIC/R/514/2/7 ya mohla Pherekong 2010</p> <p><b>MOTIVE</b> DI/SDCO/DCIC/R/514/2/7 ya mohla Pherekong 2010</p> <p><b>NIGEL</b> DI/SDCI/DCIC/R/514/2/7 ya mohla 31 Pherekong 2012</p> <p><b>OORTREK</b> DI/R/514/2/7 ya mohla 16 Motsheanong 2006</p> <p><b>OPEET</b> DI/R/514/2/7 ya mohla 16 Motsheanong 2006</p> <p><b>OPSAAL</b> DI/R/514/2/7 ya mohla 16 Motsheanong 2006</p> <p><b>OTTER</b> DI/R/202/3/7 ya mohla 21 Pudungwane 2001</p> <p><b>OUTLINE</b> DI/DCI/DCIC/R/514/2/7 ya mohla 31 Pherekong 2011</p>	

TEKANTSHO YA MEFUTA YA DIREKOTO TSE FUMANEHANG HANGHANG HO LALELA KAROLO 15(1)(a) YA MOLAO WA MATLAFATSO YA THODISO YA TLHAHISOLESERING, 2000	MOKGWA WA HO THOLA DIREKOTO
<b>MOLEMONG WA HO ETSA DIKOPI HO LALELA KAROLO 15(1)(a)(ii)</b>	
<p><b>PACT</b> DI/SDCO/DCIC/R/514/2/7 ya mohla Pherekgong 2010</p> <p><b>PAROOL</b> DI/SDCI/DCIC/R/514/2/4 ya mohla 26 Lwetse 2011 DI/SDCI/DCIC/R/514/2/7 ya mohla 15 Phato 2012</p> <p><b>PEBBLE</b> DI/SDCI/DCIC/R/514/2/7 ya mohla Mmesa 2015</p> <p><b>PRONE</b> DI/SDCO/DCIC/R/514/2/7 ya mohla Pherekgong 2010</p> <p><b>PROTEA</b> DI/SDCO/DCIC/R/514/2/7 ya mohla Pherekgong 2010 DI/DCI/DCIC/R/514/2/7 ya mohla 31 Pherekgong 2011</p> <p><b>REINDEER</b> DI/R/202/3/7 ya mohla 11 Tlhakubele 2002 DI/SDCO/DCIC/R/514/2/7 ya mohla Pherekgong 2010</p> <p><b>REKSTOK</b> DI/SDCI/DCIM/R/514/2/7 ya mohla 28 Phupu 2008 DI/SDCO/DCIC/R/514/2/7 ya mohla Pherekgong 2010 DI/SDCI/DCIC/R/514/2/4 ya mohla 15 Mmesa 2011 DI/SDCI/DCIC/R/514/2/7 ya mohla 31 Pherekgong 2012</p> <p><b>RIEMPIES</b> DI/R/514/2/7 ya mohla 16 Motsheanong 2006</p> <p><b>RUGGRAAT</b> DI/SDCI/DCIC/R/514/2/4 ya mohla 26 Lwetse 2011 DI/SDCI/DCIC/R/514/2/7 ya mohla 31 Pherekgong 2012</p> <p><b>SAFRAAN</b> DI/SDCI/DCIC/R/514/2/4 ya mohla 15 Mmesa 2011</p> <p><b>SAVANNAH</b> DI/SDCI/DCIM/R/514/2/7 ya mohla 27 Phupjane 2008 DI/SDCI/DCIC/R/514/2/7 ya mohla 03 Phupjane 2011 DI/SDCI/DCIC/R/514/2/7 ya mohla 03 Mphalane 2011</p> <p><b>SCAPULA</b> DI/SDCI/DCIC/R/514/2/4 ya mohla 15 Mmesa 2011</p> <p><b>SCEPTIC</b> DI/SDCI/DCIM/R/514/2/7 ya mohla 27 Phupjane 2008 DI/SDCO/DCIC/R/514/2/7 ya mohla Pherekgong 2010 DI/SDCI/DCIC/R/514/2/7 ya mohla 31 Pherekgong 2012 DI/SDCI/DCIC/R/514/2/7 ya mohla 23 Mmesa 2012</p> <p><b>SCLERA</b> DI/SDCI/DCIC/R/514/2/4 ya mohla 26 Lwetse 2011</p> <p><b>SECUNDUS</b> DI/SDCI/DCIC/R/514/2/4 ya mohla 26 Lwetse 2011</p> <p><b>SEDUKU</b> DI/SDCI/DCIC/R/514/2/4 ya mohla 26 Lwetse 2011</p> <p><b>SEILJAG</b> DI/R/514/2/7 ya mohla 16 Motsheanong 2006 DI/DCI/DCIC/R/514/2/7 ya mohla 31 Pherekgong 2011 DI/SDCI/DCIC/R/514/2/7 ya mohla 15 Phato 2012</p> <p><b>SEVTA</b> DI/R/514/2/7 ya mohla 27 Mphalane 2005</p> <p><b>SHOVEL</b> DI/SDCI/DCIC/R/514/2/7 ya mohla 15 Phato 2012</p> <p><b>SHUTTER</b> DI/SDCI/DCIC/R/514/2/7 ya mohla 10 Mmesa 2013</p> <p><b>SNOEK</b> DI/R/514/2/7 ya mohla 16 Motsheanong 2006</p>	

<p>TEKANTSHO YA MEFUTA YA DIREKOTO TSE FUMANEHANG HANGHANG HO LATELA KAROLO 15(1)(a) YA MOLAO WA MATLAFATSO YA THODISO YA TLHAHISOLESERING, 2000</p>	<p>MOKGWA WA HO THOLA DIREKOTO</p>
<p>MOLEMONG WA HO ETSA DIKOPI HO LATELA KAROLO 15(1)(a)(ii)</p>	
<p><b>SPEEDO</b> DI/R/514/2/7 ya mohla 16 Motsheanong 2006</p> <p><b>STOMATI</b> DI/SDCI/DCIC/R/514/2/4 ya mohla 26 Lwetse 2011</p> <p><b>SUPER</b> DI/R/514/2/7 ya mohla 07 Pudungwane 2005</p> <p><b>SWIVEL</b> DI/R/202/3/7 ya mohla 21 Pudungwane 2001</p> <p><b>TOMBSTONE</b> DI/SDCI/DCIC/R/514/2/7 ya mohla 23 Mmesa 2012 DI/SDCI/DCIC/R/514/2/7 ya mohla 18 Phupjane 2012</p> <p><b>TRAMPOLIEN</b> DEF INT/C/202/3 ya mohla 05 Motsheanong 1999</p> <p><b>VIRIATO</b> DI/SDCI/DCIC/R/514/2/4 ya mohla 26 Lwetse 2011</p> <p><b>VLAKVARK</b> DI/R/514/2/7 ya mohla 16 Motsheanong 2006</p> <p><b>WALLPAPER</b> DI/R/514/2/7 ya mohla 16 Motsheanong 2006</p> <p><b>WENDY</b> DI/R/514/2/7 ya mohla 16 Motsheanong 2006</p> <p><b>YAHOO</b> DI/SDCI/DCIC/R/514/2/4 ya mohla 15 Mmesa 2011 DI/SDCI/DCIC/R/514/2/7 ya mohla 15 Phato 2012</p> <p><b>ZAIRE</b> DI/SDCI/DCIC/R/514/2/7 ya mohla Mmesa 2015</p> <p><b>ZAIRE-GALLERY</b> DI/SDCI/DCIC/R/514/2/7 ya mohla Mmesa 2015</p> <p><b>ZAIRE-GALLERY-IVORY</b> DI/SDCI/DCIC/R/514/2/7 ya mohla Mmesa 2015</p> <p><b>ZAIRE-PUTHON</b> DI/SDCI/DCIC/R/514/2/7 ya mohla Mmesa 2015</p> <p><b>ZAIRE-TADPOLE</b> DI/SDCI/DCIC/R/514/2/7 ya mohla Mmesa 2015</p> <p><b>ZEPELIN</b> DI/R/514/2/7 ya mohla 16 Motsheanong 2006</p> <p><u>Direkoto kahara Diatjhaefe tsa Lefapha la Tshireletso tse amanang le Diopereishene tse qadileng tse kenyelleditseng 31 Tshitwe 2015.</u></p> <p>Korean War 1950 - 1953 1<sup>st</sup> World War 1914 - 1915 2<sup>nd</sup> World War 1939 - 1945 Ho thehwa ha Lebotho la Tshireletso la Kopano mohla 1912 Ngolellano e tshwailweng <b>Restricted</b> e hloilweng ho fihla le ho kenyelletsa 31 Tshitwe 2015.</p>	
<p>TEKANTSHO YA MEFUTA YA DIREKOTO TSE FUMANEHANG HANGHANG HO LATELA KAROLO 15(1)(a) YA MOLAO WA MATLAFATSO YA THODISO YA TLHAHISOLESERING, 2000</p>	<p>MOKGWA WA HO THOLA DIREKOTO</p>

TEKANTSHO YA MEFUTA YA DIREKOTO TSE FUMANEHANG HANGHANG HO LATELA KAROLO 15(1)(a) YA MOLAO WA MATLAFATSO YA THODISO YA TLHAHISOLESSEDING, 2000	MOKGWA WA HO THOLA DIREKOTO
TSE FUMANEHANG MAHALA HO LATELA KAROLO 15(1)(a)(iii)	
<p><u>Diphatlalatso tsa DOD:</u></p> <ul style="list-style-type: none"> <li>i. Molao wa Tshireletso, 1957 (Molao Nomoro 44 wa 1957) o fetotsweng.</li> <li>ii. White Paper malebana le Tshireletso (1996).</li> <li>iii. Defence Review (2014).</li> <li>iv. Direpoto tsa Selemo tsa Lefapha la Tshireletso.</li> <li>v. Strategic Plan ya Lefapha la Tshireletso.</li> <li>vi. Mahlasedi a Tlhahisoleseding a Lefapha la Tshireletso.</li> </ul> <p><u>Diphatlalatso tsa Tlhahisoleseding tsa Ntlo-Kgolo:</u> SA Soldier 2001 – 2015.</p>	<p>Diphatlalatso di ka tholeha le ho ntshwa websaeteng ya semmuso ya Lefapha la Tshireletso.</p> <p><a href="http://www.dod.mil.za">www.dod.mil.za</a></p>

## 16. Dibaka tsa ho bala

- a. Direkoto kaofela di ballwa diphapusing tsa ho ho bala tsa Lefapha la Tshireletso tlasa maemo a tla tiisa hore di bolokehile. Direkoto tsa diatjhaefe tsa Lefapha la Tshireletso di ntshuwa ho latela phethahatso ya molao, mmoho le Molao wa Matlafatso ya Thodiso ya Tlhahisoleseding (Molao Nomoro 2 wa 2000). Molao wa Tshireletso ya Tlhahisoleseding, 1982 (Molao Nomoro 84 wa 1982) le Molao wa Diatjhaefe tsa Naha Afrika Borwa, 1996 (molao Nomoro 43 wa 1996) o fetotsweng.
- b. Disebediswa tse thusang ho tsoma tlhahisoleseding kapa direkoto di mofuteng wa dihlopha tsa manane a diatjhaefe tse ngotsweng pampiring. Tlhaloso ya lenane le leng le le leng le nyalana le sehlopha sa mofuta wa atjhaefe, mohlala Command-General group 5. Manane ana a ka feta 2000, mme a tshwerwe nomoro ya tshupo ya faele, tlhaloso le letsatsi la theminal malebana le faele ya sehlopha se itseng. Manane ana a sebediswa ho tsoma rekoto e itseng.

17. Thodiso le tefo. Direkoto tsa diatjhaefe di fumaneha Diatjhaefeng tsa Lefapha la Tshireletso hape (haeba boemo ba ditokomane tsa sethato bo dumela) ho tla etswa dikopi mme di ka rekwa ka tefo e beuweng ya 60c leqhephe la A4 ka leng.

## 18. Tsebisano ya boiteanyo ba Diatjhaefe tsa Lefapha la Tshireletso

Lebitso: Department of Defence  
 Aterese ya Poso: Department of Defence Archives  
 Private Bag X289  
 Pretoria  
 0001

Nomoro ya Mohala: (012) 339 4600  
 Nomoro ya Fakse: (012) 339 4631  
 Aterese ya E-Mail: [sandfdoc@mweb.co.za](mailto:sandfdoc@mweb.co.za)



19. Ditshebeletso tse teng tsa Diatjhaefe tsa Lefapha la Tshireletso le hore ditshebeletso tsena di tholahala jwang na:

- a. Ho hlopha le ho fana ka tshebeletso ya direkoto le mangolo a mosebetsi hore a sebediswe ke bahiruwa ba Lefapha la Tshireletso ba mosebetsing kapa beng ka bona.
- b. Ho ntshetsa bahiruwa ba Lefapha la Tshireletso ba mosebetsing dikopi tsa ditokomane ho tswa direktong tsa bahiruwa, jwaloka direpoto tsa dithuto, mangolo a sesole a ho kganna dipalangwang, mangolo a lefa, jwalojwalo.
- c. Ho ntsha dikgau tsa ntwA Afrika Borwa. Maloko a tshwanetseng kapa beng ka bona a dumelletswa ho kenya kopo ya dikgau tsa NtwA ya Pele ya Lefatshe, NtwA ya Bobedi ya Lefatshe le NtwA ya Korea. Dikgau tse nthuwang la ho qala ke mahala athe tse ntshuwang hape dia lefella.
- d. Leha ditshebeletso di fanwa mahala ho na le ditefo tse beuweng malebana tlhahiso ya dintho jwalokaha ho boletswa temaneng ya 11.j.
- e. Ho thola ditshebeletso ho Diatjhaefe tsa Lefapha la Tshireletso, dikopo di ka lebiswa boiteanyong bo hlahisitsweng kahodimo.

## MEFUTA YA DIREKOTO

### 20. Lenane la Diatjhaefe tsa Lefapha la Tshireletso

Nomoro Lenaneng	Tshupo ya Faele	Tekantsho
	a	b
1	100	<b>BAHIRUWA.</b> (lenane la direkoto le tshwere ditshupo tse akaretsang boholo ba mesebetsi ya batho kaofela kahara Lefapha la Tshireletso. Hona ho kenyeletsa ho thaota, peo le ho hira batho, thuto, thupelo le kaho ya batho; tswelisopele e tlang, moputso le tlhathobo ya tshebetso: direnke le sebopeliso sa direnke sa Lebotho la Tshireletso Afrika Borwa, menyetla e lekanang le mehato ya tiisetso, tayo, toka ya bosole le dikamano tsa mosebetsing; ho kgaolwa mosebetsing, ho lelekwa le dipenshene tsa batho).
2	101	Manpower Planning
3	102	Manpower Provisioning
4	103	Personnel Development
5	104	Maintenance of Personnel
6	105	Utilisation of Personnel
7	106	Control of Personnel
8	107	Disposition of Personnel
9	200	<b>BOHLWELA.</b> (lenane le shebane le bohlwela ba sesole. Lona le kenyeletsa dipholisi tsohle tsa bohlwela ba sesole, polokeho ya batho, tlhahisoleseding le dibaka; pokello ya tlhahisoleseding ka mekgwa e fapaneng; teko ya bohlwela, bolepi ba ditshoso, ditlaleho tsa bohlwela le ditaba tsa bohlwela mahareng a mafapha).
10	201	Country Intelligence
11	202	Security
12	203	Collection of Intelligence
13	204	Arrangement of Intelligence
14	205	Distribution of Intelligence
15	206	Foreign Representation in SA
16	207	Intelligence Returns and Reports
17	208	Interdepartmental Intelligence Affairs
18	300	<b>DIOPEREISHENE.</b> (lenane le lebahane le direkoto tsa diopereishene tsa sesole. Le akaretsa ditaba tse fapaneng tse kenyeletsang thalo le tekolo: tswelopele ya ntwana, ho hloma le hlomolla, ntwana ya tobano le ntwana ya mokgelo esitana le diopereishene tse hlahositsweng; tshireletso ya fatshe le tshireletso ya moyeng; diopereishene tsa patlo le pholoso le ditlhakiso tsa thupello; thuso ho le tshebetso-mmoho le ditlamo le dinaha tse ding).
19	301	Appreciations
20	302	Force Level Planning and Force Development
21	303	Strategic Studies
22	304	Planning: Contingency, Mobilisation and Demobilisation
23	305	Operational Doctrines and Operational Preparedness and Effectiveness
24	306	Operational Planning
25	307	Role and Implementation of the SA National Defence Force
26	308	Training Exercises Demonstrations Camps and Bivouacs
27	309	Specific Operations
28	310	Special Operations
29	311	Assistance and Co-operations
30	312	Civil Defence
31	313	Air Defence
32	314	Air Support
33	315	Maritime Defence
34	316	Search and Rescue Services
35	317	Electronic Warfare
36	318	Telecommunications
37	319	Navigation
38	320	Naval Activities
39	321	Resolution of International Organisation
40	322	Survey and Mapping
41	323	Operational Photography
42	324	Operational Movements
43	325	Vacant (Closed)
44	326	Violations
45	327	Borders
46	328	Communication Operations
47	329	National Key Points
48	330	Subversion

Nomoro Lenaneng	Tshupo ya Faele	Tekantsho
	a	b
49	331	Treaties
50	400	<b>DIRWALLO.</b> (lenane la direkoto le kenyeletsa ditaba kaofela tse lebahaneng le dirwallo kahara Lefapha la Tshireletso. Ka tsela ena le amana le tsohle tsa diopereishene tsa sesole tse shebaneng le patlisiso, thalo le kaho, phumano, poloko, kabo, tlhokomelo, palehiso le tahlo ya diphahlo, phumano kapa tlhomo, tlhokomelo, tshebediso le tahlo ya dibaka; esitana le phumano kapa phano ya diitsebeletso).
51	401	Logistics Services
52	402	Logistical Management
53	403	Acquisition of Equipment and Supplies
54	404	Maintenance
55	405	Administration of Commodities
56	406	Control of Stores
57	407	Logistic Doctrines
58	408	System Management
59	500	<b>TSAMAISO YA LEFAPHA.</b> (lenane ke le leholo ke kentseng dintlha kaofela tsa botsamaisi. Tsena di kentse bolaedi le taolo; taolo ya setlamo e kentseng theo/qhaqhollo ya makala a lebotho; diitjhelete tsa DOD le tekolo; merero ya keteko le lepetjo; direkoto tsa botsamaisi le tlhahisoleseding, taetsano le theknoloji tsa DOD) the series is a comprehensive series encompassing all departmental management aspects.
60	501	Command and Control
61	502	Organisational Control
62	503	Organisation and Work Study
63	504	Defence Budget
64	505	Defence Income and Expenditure
65	506	Auditing
66	507	Institutions and Funds
67	508	Parliamentary Enquiries
68	509	Ministerial Enquiries
69	510	Enquiries to C SANDF, Chiefs of Combat Services, Staff Divisions and Support Services
70	511	Public Relations, Media and Public Liaison, Communication
71	512	Ceremonial
72	513	Office Administration
73	514	Documentation Services
74	515	Language Services
75	516	Computer Services
76	517	Military Museums and Monuments
77	518	Publications
78	519	Circulars and Instructions of Non-SANDF Organisations
79	520	Visits and Movements of Persons, Aircraft and Ships
80	521	Committees, Commissions and Boards
81	522	Conferences, Congresses, Seminars, Symposiums and Meetings
82	523	Membership and Correspondence of Associations, Institutes and other
83	524	Personnel Systems
84	525	Intelligence Systems
85	526	Operational Systems
86	527	Logistic Systems
87	528	Departmental Management Systems

**APPENDIX A**

**FORM A**

**REQUEST FOR ACCESS TO RECORD OF PUBLIC BODY**  
(Section 18(1) of the Promotion of Access to Information Act, 2000

(Act No. 2 of 2000))

**[Regulation 6]**

**FOR DEPARTMENTAL USE**

Reference number:

Request received by \_\_\_\_\_ (state rank,  
name and surname of information officer/deputy information officer) on  
(date) at \_\_\_\_\_ (place).

Request fee (if any): R .....

Deposit (if any): R .....

Access fee: R .....

\_\_\_\_\_  
SIGNATURE OF INFORMATION OFFICER/DEPUTY  
INFORMATION OFFICER

**A. Particulars of public body**

The Information Officer/Deputy Information Officer:

**B. Particulars of person requesting access to the record**

- (a) *The particulars of the person who requests access to the record must be given below.*  
(b) *The address and/or fax number in the Republic to which the information is to be sent, must be given.*  
(c) *Proof of the capacity in which the request is made, if applicable, must be attached.*

Full names and surname:

Identity number:

Postal address:

Fax number:

Telephone number: \_\_\_\_\_ E-mail address:

Capacity in which request is made, when made on behalf of another person:

**C. Particulars of person on whose behalf request is made**

*This section must be completed ONLY if a request for information is made on behalf of another person.*

Full names and surname:

Identity number:

**D. Particulars of record**

- (a) *Provide full particulars of the record to which access is requested, including the reference number if that is known to you, to enable the record to be located.*  
(b) *If the provided space is inadequate, please continue on a separate folio and attach it to this form. **The requester must sign all the additional folios.***

1. **Description of record or relevant part of the record:**

2. **Reference number, if available:**

3. **Any further particulars of record:**

**E. Fees**

- (a) *A request for access to a record, other than a record containing personal information about yourself, will be processed only after a **request fee** has been paid.*  
(b) *You will be notified of the amount required to be paid as the request fee.*  
(c) *The **fee payable for access** to a record depends on the form in which access is required and the reasonable time required to search for and prepare a record.*  
(d) *If you qualify for exemption of the payment of any fee, please state the reason for exemption.*

Reason for exemption from payment of fees:

**F. Form of access to record**

*If you are prevented by a disability to read, view or listen to the record in the form of access provided for in 1 to 4 below, state your disability and indicate in which form the record is required.*

Disability:		Form in which record is required:	
<p>Mark the appropriate box with an X.</p> <p>NOTES:</p> <p>(a) Compliance with your request for access in the specified form may depend on the form in which the record is available.</p> <p>(b) Access in the form requested may be refused in certain circumstances. In such a case you will be informed if access will be granted in another form.</p> <p>(c) The fee payable for access to the record, if any, will be determined partly by the form in which access is requested.</p>			
<b>1. If the record is in written or printed form:</b>			
<input type="checkbox"/>	copy of record*	<input type="checkbox"/>	inspection of record
<b>2. If record consists of visual images -</b> (this includes photographs, slides, video recordings, computer-generated images, sketches, etc.):			
<input type="checkbox"/>	view the images	<input type="checkbox"/>	copy of the images*
<input type="checkbox"/>		<input type="checkbox"/>	transcription of the images*
<b>3. If record consists of recorded words or information which can be reproduced in sound:</b>			
<input type="checkbox"/>	listen to the soundtrack (audio cassette)	<input type="checkbox"/>	transcription of soundtrack* (written or printed document)
<b>4. If record is held on computer or in an electronic or machine-readable form:</b>			
<input type="checkbox"/>	printed copy of record*	<input type="checkbox"/>	printed copy of information derived from the record*
<input type="checkbox"/>		<input type="checkbox"/>	copy in computer readable form* (stiffy or compact disc)
*If you requested a copy or transcription of a record (above), do you wish the copy or transcription to be posted to you?			YES
			NO
<b>Postage is payable.</b>			
<i>Note that if the record is not available in the language you prefer, access may be granted in the language in which the record is available.</i>			
In which language would you prefer the record?			

**G. Notice of decision regarding request for access**

*You will be notified in writing whether your request has been approved/denied. If you wish to be informed in another manner, please specify the manner and provide the necessary particulars to enable compliance with your request.*

How would you prefer to be informed of the decision regarding your request for access to the record?

Signed at \_\_\_\_\_ this \_\_\_\_\_ day of \_\_\_\_\_ 20

SIGNATURE OF REQUESTER / PERSON ON  
WHOSE BEHALF REQUEST IS MADE

## APPENDIX B

### FORM B

#### NOTICE OF INTERNAL APPEAL

(Section 75 of the Promotion of Access to Information Act, 2000 (Act No. 2 of 2000))

#### [Regulation 8]

STATE YOUR REFERENCE NUMBER:

#### A. Particulars of public body

The Information Officer/Deputy Information Officer:

#### B. Particulars of requester/third party who lodges the internal appeal

- (a) The particulars of the person who lodge the internal appeal must be given below.  
(b) Proof of the capacity in which appeal is lodged, if applicable, must be attached.  
(c) If the appellant is a third person and not the person who originally requested the information, the particulars of the requester must be given at C below.

Full names and surname:

Identity number:

Postal address:

Fax number: \_\_\_\_\_ Telephone number:

E-mail address:

Capacity in which an internal appeal on behalf of another person is lodged:

#### C. Particulars of requester

*This section must be completed ONLY if a third party (other than the requester) lodges the internal appeal.*

Full names and surname:

Identity number:

#### D. The decision against which the internal appeal is lodged

Mark the decision against which the internal appeal is lodged with an **X** in the appropriate box:

	Refusal of request for access
	Decision regarding fees prescribed in terms of section 22 of the Act
	Decision regarding the extension of the period within which the request must be dealt with in terms of section 26(1) of the Act
	Decision in terms of section 29(3) of the Act to refuse access in the form requested by the requester
	Decision to grant request for access

**E. Grounds for appeal**

*If the provided space is inadequate, please continue on a separate folio and attach it to this form.  
You must sign all the additional folios.*

State the grounds on which the internal appeal is based:

State any other information that may be relevant in considering the appeal:

**F. Notice of decision on appeal**

*You will be notified in writing of the decision on your internal appeal. If you wish to be informed in another manner, please specify the manner and provide the necessary particulars to enable compliance with your request.*

State the manner:

Particulars of manner:

Signed at \_\_\_\_\_ this \_\_\_\_\_ day of \_\_\_\_\_ 20

SIGNATURE OF APPELLANT

**FOR DEPARTMENTAL USE:**

**OFFICIAL RECORD OF INTERNAL APPEAL:**

Appeal received on \_\_\_\_\_ (date) by \_\_\_\_\_ (state rank, name and surname of information officer/deputy information officer).

Appeal accompanied by the reasons for the information officer's/deputy information officer's decision and, where applicable, the particulars of any third party to whom or which the record relates, submitted by the information officer/deputy information officer on (date) to the relevant authority.

**OUTCOME OF APPEAL:**

DECISION OF INFORMATION OFFICER/DEPUTY INFORMATION OFFICER CONFIRMED/NEW  
DECISION SUBSTITUTED

NEW DECISION:

\_\_\_\_\_  
RELEVANT AUTHORITY \_\_\_\_\_ DATE

RECEIVED BY THE INFORMATION OFFICER/DEPUTY INFORMATION OFFICER FROM THE  
RELEVANT AUTHORITY ON (date):